

# Anti-ABL2 Antibody (R3K87)

## Summary

---

<b>Catalog No.</b>	RHE36601
<b>Clone ID</b>	R3K87
<b>Host species</b>	Mouse
<b>Tested applications</b>	IF: 1:200-1:1000
<b>Species reactivity</b>	Human, Mouse
<b>Form</b>	Liquid
<b>Storage buffer</b>	0.01M PBS, pH 7.4, 0.05% Sodium Azide.
<b>Concentration</b>	1 mg/ml
<b>Purity</b>	>95% as determined by SDS-PAGE.
<b>Clonality</b>	Monoclonal
<b>Isotype</b>	IgG1
<b>Applications</b>	IF
<b>Target</b>	Abelson tyrosine-protein kinase 2, ABL2, ABLL, Tyrosine-protein kinase ARG, Abelson-related gene protein, Tyrosine-protein kinase ABL2, Abelson murine leukemia viral oncogene homolog 2, ARG
<b>Purification</b>	Protein A/G purified from cell culture supernatant.
<b>Endotoxin level</b>	Please contact with the lab for this information.
<b>Accession</b>	P42684

**Stability and Storage**

Use a manual defrost freezer and avoid repeated freeze-thaw cycles.

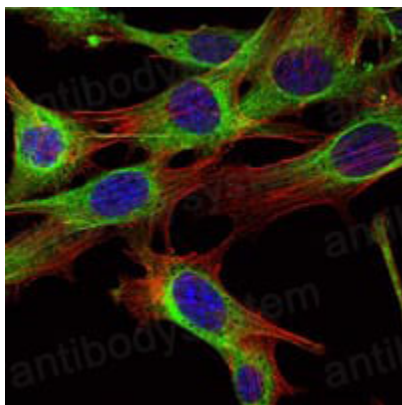
Store at 4°C short term (1-2 weeks). Store at -20°C 12 months. Store at -80°C long term.

**Note**

For research use only.

## Data Image

---



Immunofluorescence

Immunofluorescence analysis of NIH/3T3 cells using ABL2 mouse mAb (green). Blue: DRAQ5 fluorescent DNA dye. Red: Actin filaments have been labeled with Alexa Fluor-555 phalloidin.