

Anti-PIK3CA Antibody (R3K76)

Summary

Catalog No.	RHE35201
Clone ID	R3K76
Host species	Mouse
Tested applications	FCM: 1:200-1:400, IF: 1:200-1:1000, IHC: 1:200-1:1000
Species reactivity	Human, Mouse, Rat, Rabbit
Form	Liquid
Storage buffer	0.01M PBS, pH 7.4, 0.05% Sodium Azide.
Concentration	1 mg/ml
Purity	>95% as determined by SDS-PAGE.
Clonality	Monoclonal
Isotype	IgG2a
Applications	FCM, IF, IHC
Target	Phosphoinositide-3-kinase catalytic alpha polypeptide, PIK3CA, PtdIns-3-kinase subunit p110-alpha, PI3-kinase subunit alpha, p110alpha, Serine/threonine protein kinase PIK3CA, PI3K-alpha, Phosphoinositide 3-kinase alpha, Phosphatidylinositol 4,5-bisphosphate 3-kinase catalytic subunit alpha isoform, PI3Kalpha, PtdIns-3-kinase subunit alpha, Phosphatidylinositol 4,5-bisphosphate 3-kinase 110 kDa catalytic subunit alpha
Purification	Protein A/G purified from cell culture supernatant.
Endotoxin level	Please contact with the lab for this information.

Recombinant Proteins & Antibodies

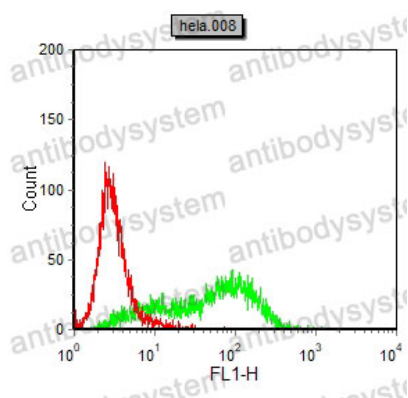
Accession P42336

Use a manual defrost freezer and avoid repeated freeze-thaw cycles.

Stability and Storage Store at 4°C short term (1-2 weeks). Store at -20°C 12 months. Store at -80°C long term.

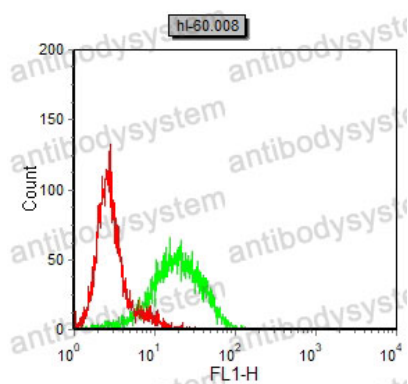
Note For research use only.

Data Image



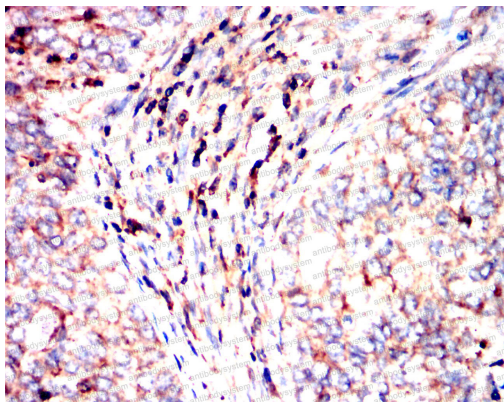
Flow Cytometry

Flow cytometric analysis of HELA cells using PIK3CA mouse mAb (green) and negative control (red).



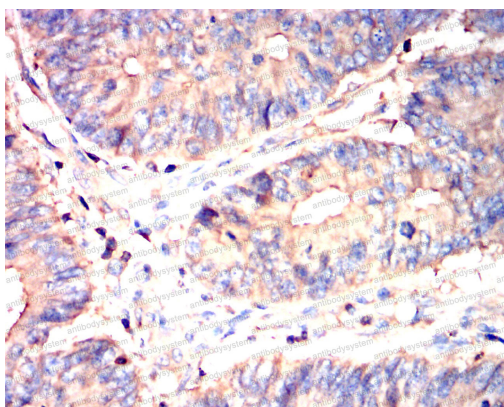
Flow Cytometry

Flow cytometric analysis of HL-60 cells using PIK3CA mouse mAb (green) and negative control (red).



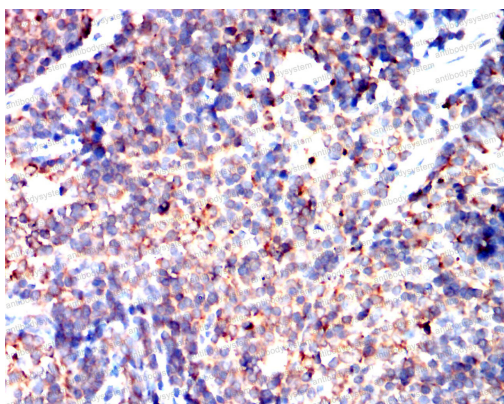
Immunohistochemical

Immunohistochemical analysis of paraffin-embedded human cervical cancer showing cytoplasmic localization using PIK3CA mouse mAb with DAB staining.



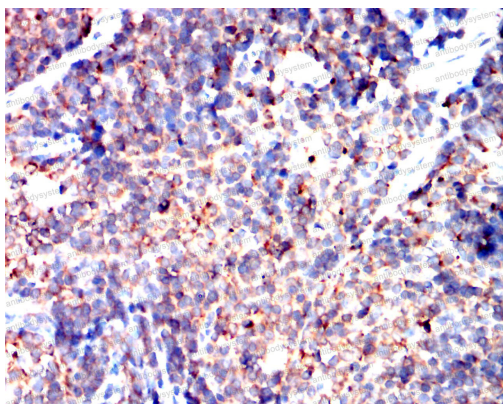
Immunohistochemical

Immunohistochemical analysis of paraffin-embedded human colon cancer showing cytoplasmic localization using PIK3CA mouse mAb with DAB staining.

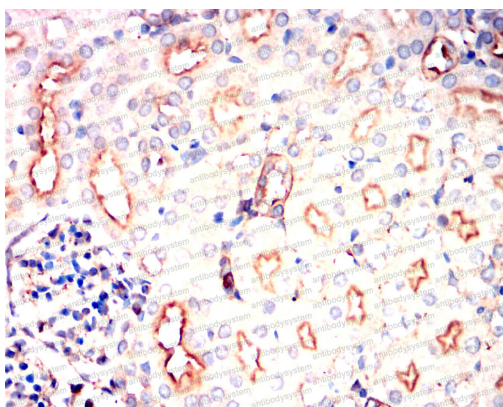


Immunohistochemical

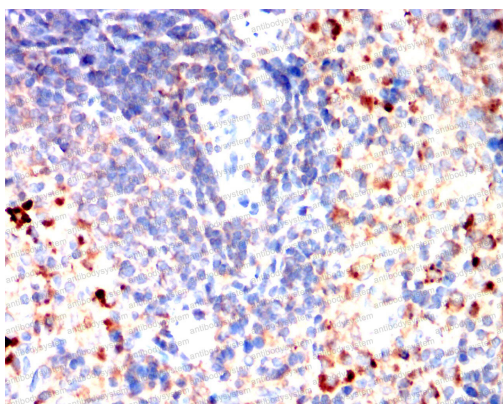
Immunohistochemical analysis of paraffin-embedded mouse spleen showing cytoplasmic localization using PIK3CA mouse mAb with DAB staining.

**Immunohistochemical**

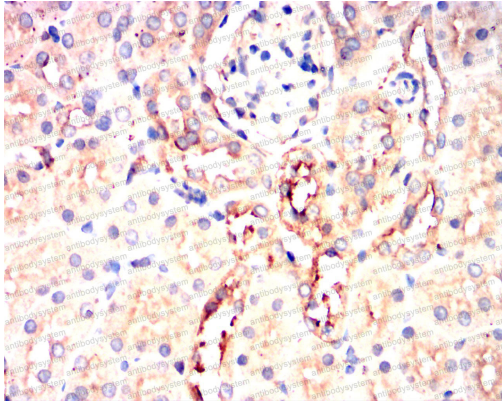
Immunohistochemical analysis of paraffin-embedded mouse spleen showing cytoplasmic localization using PIK3CA mouse mAb with DAB staining.

**Immunohistochemical**

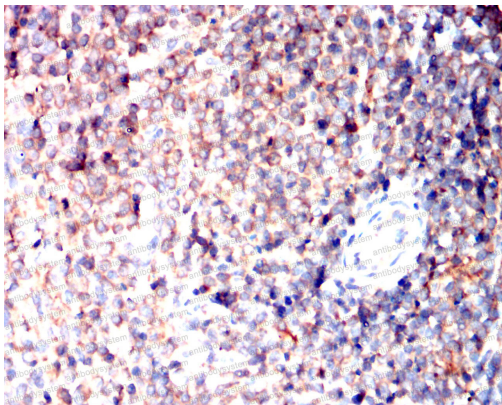
Immunohistochemical analysis of paraffin-embedded mouse kidney showing cytoplasmic localization using PIK3CA mouse mAb with DAB staining.

**Immunohistochemical**

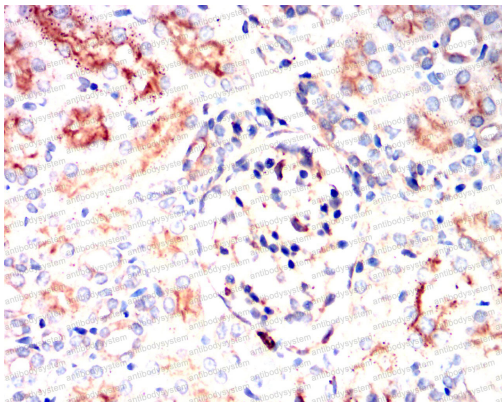
Immunohistochemical analysis of paraffin-embedded rat spleen showing cytoplasmic localization using PIK3CA mouse mAb with DAB staining.

**Immunohistochemical**

Immunohistochemical analysis of paraffin-embedded rat kidney showing cytoplasmic localization using PIK3CA mouse mAb with DAB staining.

**Immunohistochemical**

Immunohistochemical analysis of paraffin-embedded rabbit spleen showing cytoplasmic localization using PIK3CA mouse mAb with DAB staining.

**Immunohistochemical**

Immunohistochemical analysis of paraffin-embedded rabbit kidney showing cytoplasmic localization using PIK3CA mouse mAb with DAB staining.