

Anti-STAT1 Antibody (R3K68)

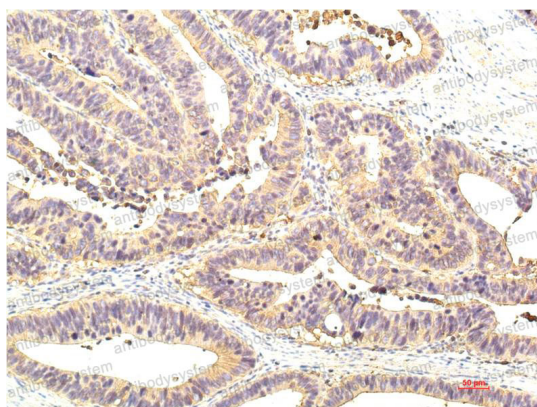
Summary

| | |
|------------------------------|---------------------------------------------------------------------------------------------------------------------------------------------------------------------|
| Catalog No. | RHE34309 |
| Clone ID | R3K68 |
| Host species | Mouse |
| Tested applications | IHC: 1:50-1:100 |
| Species reactivity | Human, Mouse, Rat |
| Form | Liquid |
| Storage buffer | 0.01M PBS, pH 7.4, 0.5% BSA, 0.05% Sodium Azide and 50% Glycerol. |
| Concentration | 1 mg/ml |
| Purity | >95% as determined by SDS-PAGE. |
| Clonality | Monoclonal |
| Isotype | IgG1 |
| Applications | IHC |
| Target | Signal transducer and activator of transcription 1-alpha/beta, STAT1, Transcription factor ISGF-3 components p91/p84 |
| Purification | Protein A/G purified from cell culture supernatant. |
| Endotoxin level | Please contact with the lab for this information. |
| Accession | P42224 |
| Stability and Storage | Use a manual defrost freezer and avoid repeated freeze-thaw cycles. Store at 4°C short term (1-2 weeks). Store at -20°C 12 months. Store at - 80°C long term. |

Note

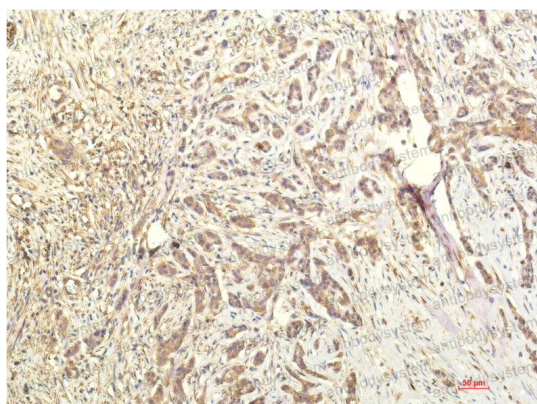
For research use only.

Data Image



Immunohistochemical

Immunohistochemistry analysis of paraffin-embedded Human Colon Tissue using STAT1 antibody. High-pressure and temperature Sodium Citrate pH 6.0 was used for antigen retrieval.



Immunohistochemical

Immunohistochemical analysis of paraffin-embedded Human tonsils using STAT1 antibody. High-pressure and temperature Sodium Citrate pH 6.0 was used for antigen retrieval.