

Anti-P2RY2 Antibody (R3K58)

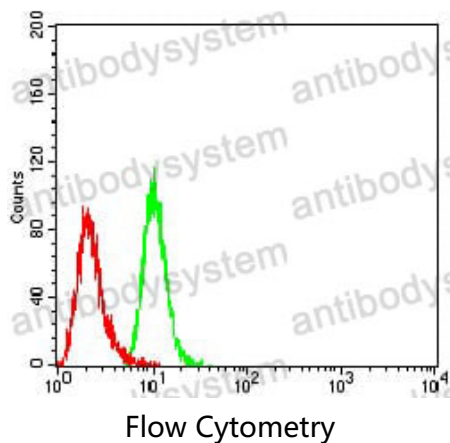
Summary

Catalog No.	RHE31401
Clone ID	R3K58
Host species	Mouse
Tested applications	ELISA: 1:10000, FCM: 1:200-1:400
Species reactivity	Human
Form	Liquid
Storage buffer	0.01M PBS, pH 7.4, 0.05% Sodium Azide.
Concentration	1 mg/ml
Purity	>95% as determined by SDS-PAGE.
Clonality	Monoclonal
Isotype	IgG2b
Applications	ELISA, FCM
Target	P2Y2, Purinergic receptor, P2U purinoceptor 1, P2RU1, P2RY2, P2Y purinoceptor 2, ATP receptor, P2U1, P2U receptor 1
Purification	Protein A/G purified from cell culture supernatant.
Endotoxin level	Please contact with the lab for this information.
Accession	P41231
Stability and Storage	Use a manual defrost freezer and avoid repeated freeze-thaw cycles. Store at 4°C short term (1-2 weeks). Store at -20°C 12 months. Store at -80°C long term.

Note

For research use only.

Data Image



Flow cytometric analysis of Hela cells using P2RY2 mouse mAb (green) and negative control (red).