

Anti-NAA10 Antibody (R3K57)

Summary

Catalog No.	RHE31201
Clone ID	R3K57
Host species	Mouse
Tested applications	ELISA: 1:10000, FCM: 1:200-1:400, IF: 1:200-1:1000, WB: 1:500-1:2000
Species reactivity	Human, Mouse, Monkey
Form	Liquid
Storage buffer	0.01M PBS, pH 7.4, 0.05% Sodium Azide.
Concentration	1 mg/ml
Purity	>95% as determined by SDS-PAGE.
Clonality	Monoclonal
Isotype	IgG1
Applications	ELISA, FCM, IF, WB
Target	TE2, hARD1, N-alpha-acetyltransferase 10, ARD1, ARD1A, NAA10, N-terminal acetyltransferase complex ARD1 subunit homolog A, NatA catalytic subunit Naa10
Purification	Protein A/G purified from cell culture supernatant.
Endotoxin level	Please contact with the lab for this information.
Accession	P41227

Stability and Storage

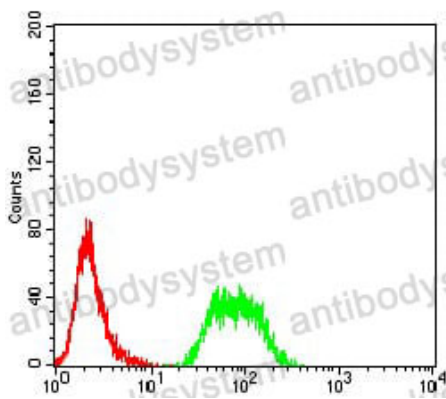
Use a manual defrost freezer and avoid repeated freeze-thaw cycles.

Store at 4°C short term (1-2 weeks). Store at -20°C 12 months. Store at -80°C long term.

Note

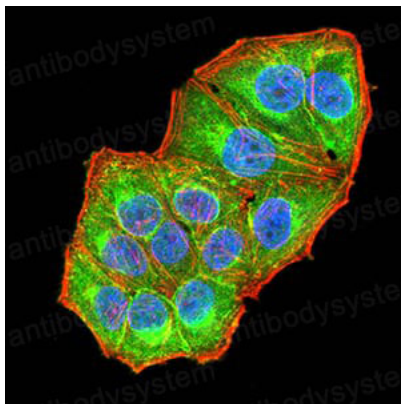
For research use only.

Data Image



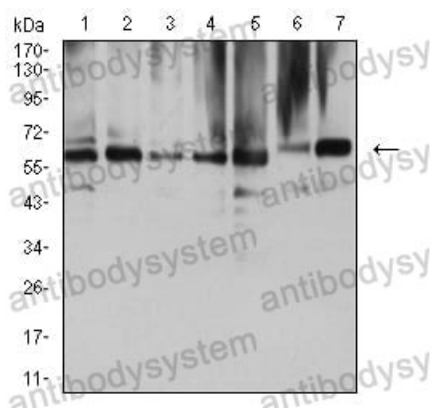
Flow Cytometry

Flow cytometric analysis of SMMC-7721 cells using NAA10 mouse mAb (green) and negative control (red).



Immunofluorescence

Immunofluorescence analysis of HeLa cells using NAA10 mouse mAb (green). Blue: DRAQ5 fluorescent DNA dye. Red: Actin filaments have been labeled with Alexa Fluor- 555 phalloidin.



Western blot

Western blot analysis using NAA10 mouse mAb against COS7 (1), HEK293 (2), HL-60 (3), MCF-7 (4), Hela (5), NIH/3T3 (6), and C2C12 (7) cell lysate.