

# Anti-NAA10 Antibody (R3K56)

## Summary

---

<b>Catalog No.</b>	RHE31202
<b>Clone ID</b>	R3K56
<b>Host species</b>	Mouse
<b>Tested applications</b>	ELISA: 1:10000, IF: 1:200-1:1000, WB: 1:500-1:2000
<b>Species reactivity</b>	Human, Mouse, Monkey
<b>Form</b>	Liquid
<b>Storage buffer</b>	0.01M PBS, pH 7.4, 0.05% Sodium Azide.
<b>Concentration</b>	1 mg/ml
<b>Purity</b>	>95% as determined by SDS-PAGE.
<b>Clonality</b>	Monoclonal
<b>Isotype</b>	IgG1
<b>Applications</b>	ELISA, IF, WB
<b>Target</b>	TE2, hARD1, N-alpha-acetyltransferase 10, ARD1, ARD1A, NAA10, N-terminal acetyltransferase complex ARD1 subunit homolog A, NatA catalytic subunit Naa10
<b>Purification</b>	Protein A/G purified from cell culture supernatant.
<b>Endotoxin level</b>	Please contact with the lab for this information.
<b>Accession</b>	P41227

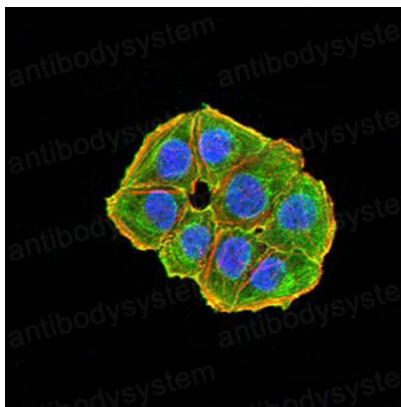
**Stability and Storage**

Use a manual defrost freezer and avoid repeated freeze-thaw cycles.

Store at 4°C short term (1-2 weeks). Store at -20°C 12 months. Store at -80°C long term.

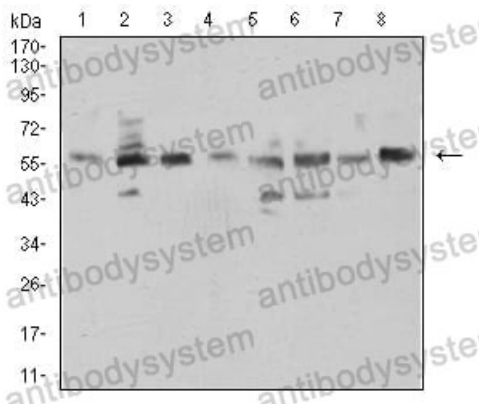
**Note**

For research use only.

**Data Image**

Immunofluorescence

Immunofluorescence analysis of HeLa cells using NAA10 mouse mAb (green). Blue: DRAQ5 fluorescent DNA dye. Red: Actin filaments have been labeled with Alexa Fluor- 555 phalloidin.



Western blot

Western blot analysis using NAA10 mouse mAb against HCT116 (1), COS7 (2), HEK293 (3), HL-60 (4), MCF-7 (5), HeLa (6), NIH/3T3 (7), and C2C12 (8) cell lysate.