

Anti-BCL6 Antibody (R3K51)

Summary

Catalog No.	RHE29901
Clone ID	R3K51
Host species	Mouse
Tested applications	ELISA: 1:10000, FCM: 1:200-1:400, IF: 1:200-1:1000, IHC: 1:200-1:1000, WB: 1:500-1:2000
Species reactivity	Human
Form	Liquid
Storage buffer	0.01M PBS, pH 7.4, 0.05% Sodium Azide.
Concentration	1 mg/ml
Purity	>95% as determined by SDS-PAGE.
Clonality	Monoclonal
Isotype	IgG1
Applications	ELISA, FCM, IF, IHC, WB
Target	BCL-5, BCL-6, Protein LAZ-3, ZNF51, BCL6, ZBTB27, Zinc finger protein 51, B-cell lymphoma 6 protein, Zinc finger and BTB domain-containing protein 27, B-cell lymphoma 5 protein, BCL5, LAZ3
Purification	Protein A/G purified from cell culture supernatant.
Endotoxin level	Please contact with the lab for this information.
Accession	P41182

Stability and Storage

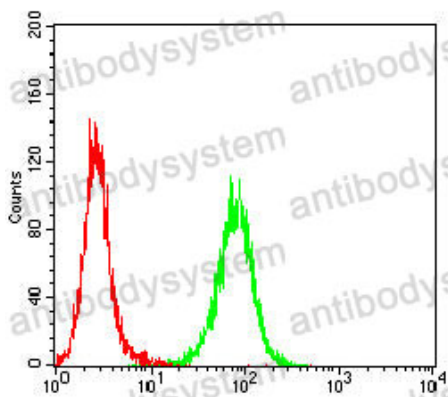
Use a manual defrost freezer and avoid repeated freeze-thaw cycles.

Store at 4°C short term (1-2 weeks). Store at -20°C 12 months. Store at -80°C long term.

Note

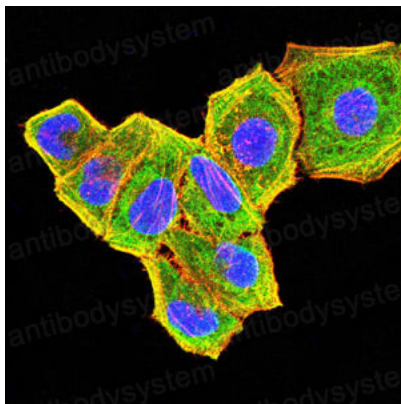
For research use only.

Data Image



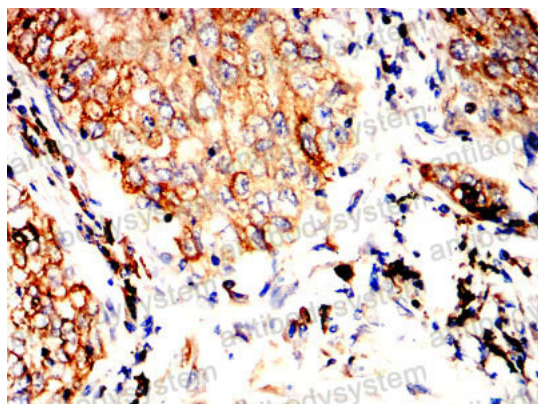
Flow Cytometry

Flow cytometric analysis of HL-60 cells using BCL6 mouse mAb (green) and negative control (red).



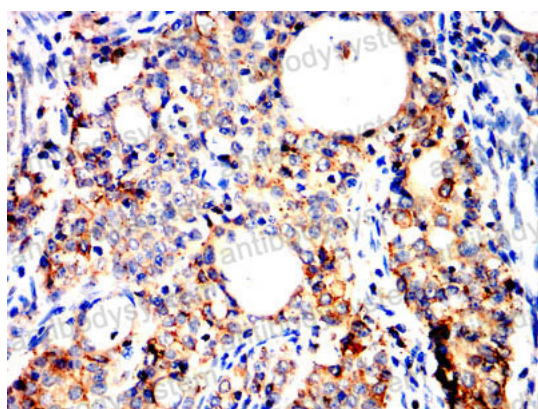
Immunofluorescence

Immunofluorescence analysis of HeLa cells using BCL6 mouse mAb (green). Blue: DRAQ5 fluorescent DNA dye. Red: Actin filaments have been labeled with Alexa Fluor-555 phalloidin.



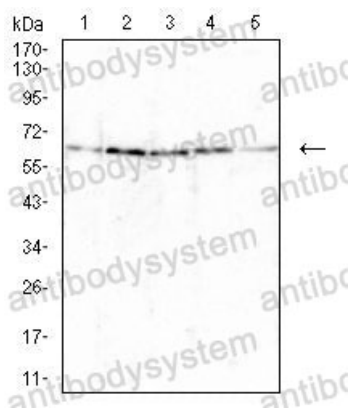
Immunohistochemical

Immunohistochemical analysis of paraffin-embedded human lung cancer tissues using BCL6 mouse mAb with DAB staining.



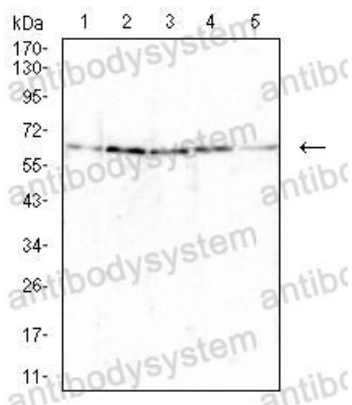
Immunohistochemical

Immunohistochemical analysis of paraffin-embedded human cervical carcinoma tissues using BCL6 mouse mAb with DAB staining.



Western blot

Western blot analysis using BCL6 mouse mAb against Jurkat (1), K562 (2), Raji (3), Ramos (4) and MOLT-4 (5) cell lysate.



Western blot

Western blot analysis using BCL6 mouse mAb against Jurkat (1), K562 (2), Raji (3), Ramos (4) and MOLT-4 (5) cell lysate.