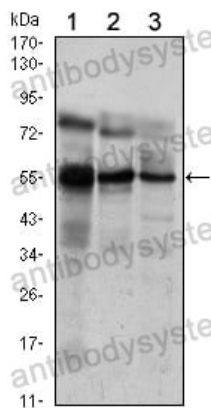


Anti-ETV5/ERM Antibody (R3K48)

Summary

Catalog No.	RHE29501
Clone ID	R3K48
Host species	Mouse
Tested applications	WB: 1:500-1:2000
Species reactivity	Human
Form	Liquid
Storage buffer	0.01M PBS, pH 7.4, 0.05% Sodium Azide.
Concentration	1 mg/ml
Purity	>95% as determined by SDS-PAGE.
Clonality	Monoclonal
Isotype	IgG1
Applications	WB
Target	Ets-related protein ERM, ERM, ETV5, ETS translocation variant 5
Purification	Protein A/G purified from cell culture supernatant.
Endotoxin level	Please contact with the lab for this information.
Accession	P41161
Stability and Storage	Use a manual defrost freezer and avoid repeated freeze-thaw cycles. Store at 4°C short term (1-2 weeks). Store at -20°C 12 months. Store at -80°C long term.
Note	For research use only.

Data Image



Western blot

Western blot analysis using ETV5 mouse mAb against Jurkat (1), NIH/3T3 (2) and MCF-7 (3) cell lysate.