

Anti-PMEL17/ME20M Antibody (R3K47)

Summary

Catalog No.	RHE28703
Clone ID	R3K47
Host species	Mouse
Tested applications	ELISA: 1:10000, FCM: 1:200-1:400
Species reactivity	Human
Form	Liquid
Storage buffer	0.01M PBS, pH 7.4, 0.05% Sodium Azide.
Concentration	1 mg/ml
Purity	>95% as determined by SDS-PAGE.
Clonality	Monoclonal
Isotype	IgG1
Applications	ELISA, FCM
Target	ME20M, Melanocyte protein PMEL, Silver locus protein homolog, Secreted melanoma-associated ME20 antigen, D12S53E, 95 kDa melanocyte-specific secreted glycoprotein, SILV, P100, Premelanosome protein, PMEL17, ME20S, PMEL, ME20-S, ME20-M, P26, P1, Melanocytes lineage-specific antigen GP100, Melanocyte protein Pmel 17, Melanoma-associated ME20 antigen
Purification	Protein A/G purified from cell culture supernatant.
Endotoxin level	Please contact with the lab for this information.
Accession	P40967

Stability and Storage

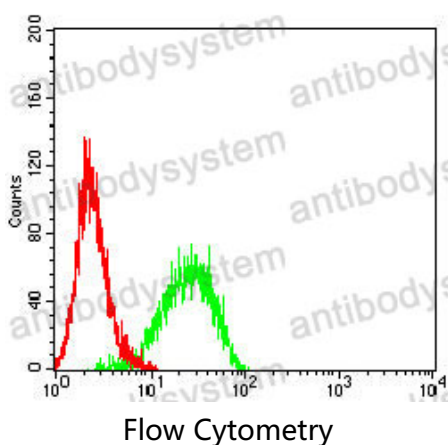
Use a manual defrost freezer and avoid repeated freeze-thaw cycles.

Store at 4°C short term (1-2 weeks). Store at -20°C 12 months. Store at -80°C long term.

Note

For research use only.

Data Image



Flow cytometric analysis of B16 cells using PMEL mouse mAb (green) and negative control (red).