

# Anti-STAT3 Antibody (R3K41)

## Summary

---

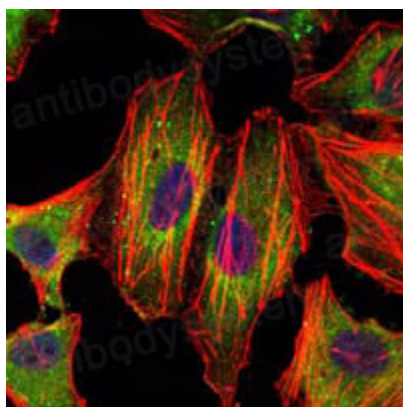
<b>Catalog No.</b>	RHE27705
<b>Clone ID</b>	R3K41
<b>Host species</b>	Mouse
<b>Tested applications</b>	IF: 1:200-1:1000, IHC: 1:200-1:1000, WB: 1:500-1:1000
<b>Species reactivity</b>	Human, Mouse, Rat, Monkey
<b>Form</b>	Liquid
<b>Storage buffer</b>	0.01M PBS, pH 7.4, 0.05% Sodium Azide.
<b>Concentration</b>	1 mg/ml
<b>Purity</b>	>95% as determined by SDS-PAGE.
<b>Clonality</b>	Monoclonal
<b>Isotype</b>	IgG1
<b>Applications</b>	IF, IHC, WB
<b>Target</b>	Signal transducer and activator of transcription 3, APRF, STAT3, Acute-phase response factor
<b>Purification</b>	Protein A/G purified from cell culture supernatant.
<b>Endotoxin level</b>	Please contact with the lab for this information.
<b>Accession</b>	P40763
<b>Stability and Storage</b>	Use a manual defrost freezer and avoid repeated freeze-thaw cycles. Store at 4°C short term (1-2 weeks). Store at -20°C 12 months. Store at -80°C long term.

**Note**

For research use only.

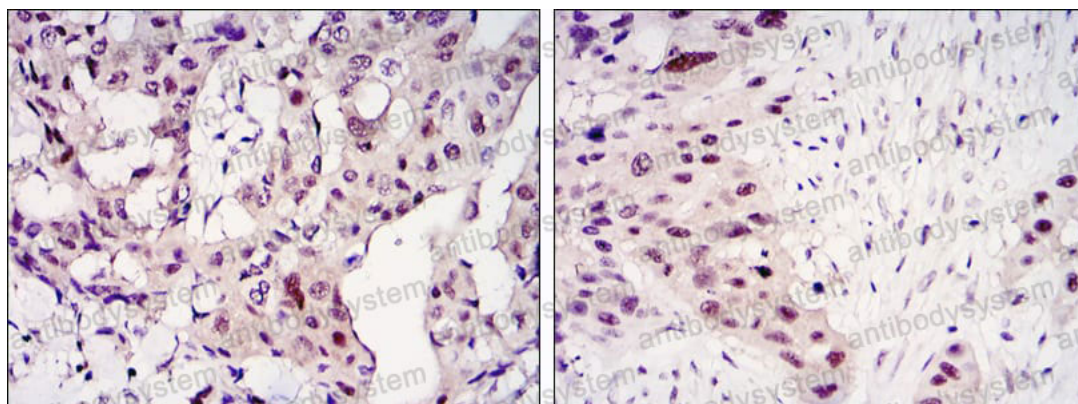
## Data Image

---



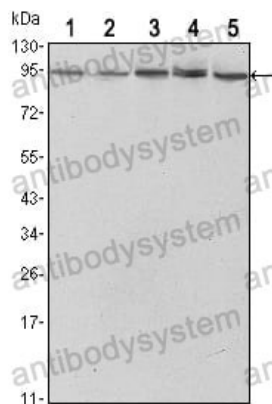
Immunofluorescence

Immunofluorescence analysis of HeLa cells using STAT3 mouse mAb (green). Blue: DRAQ5 fluorescent DNA dye. Red: Actin filaments have been labeled with Alexa Fluor-555 phalloidin.



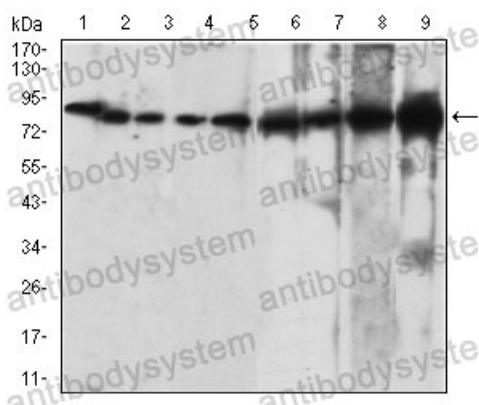
Immunohistochemical

Immunohistochemical analysis of paraffin-embedded human mammary cancer tissues (left) and lung cancer tissues (right) using STAT3 mouse mAb with DAB staining.



Western blot

Western blot analysis using STAT mouse mAb against HeLa (1), NIH/3T3 (2), Jurkat (3), PC-12 (4) and COS7 (5) cell lysate.



Western blot

Western blot analysis using STAT mouse mAb against NRK(1), C2C12(2), C6(3), 81505(4), K562(5), RSC-96(6), NIH/3T3(7), HeLa(8), Jurkat(9) cell lysate.