

Anti-MLH1 Antibody (R3K35)

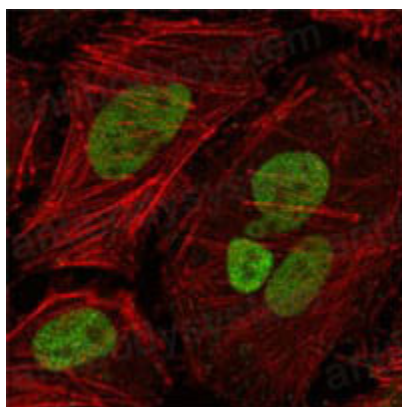
Summary

Catalog No.	RHE27602
Clone ID	R3K35
Host species	Mouse
Tested applications	IF: 1:200-1:1000, IHC: 1:200-1:1000, WB: 1:500-1:2000
Species reactivity	Human, Monkey
Form	Liquid
Storage buffer	0.01M PBS, pH 7.4, 0.05% Sodium Azide.
Concentration	1 mg/ml
Purity	>95% as determined by SDS-PAGE.
Clonality	Monoclonal
Isotype	IgG1
Applications	IF, IHC, WB
Target	COCA2, DNA mismatch repair protein Mlh1, MutL protein homolog 1, MLH1
Purification	Protein A/G purified from cell culture supernatant.
Endotoxin level	Please contact with the lab for this information.
Accession	P40692
Stability and Storage	Use a manual defrost freezer and avoid repeated freeze-thaw cycles. Store at 4°C short term (1-2 weeks). Store at -20°C 12 months. Store at -80°C long term.

Note

For research use only.

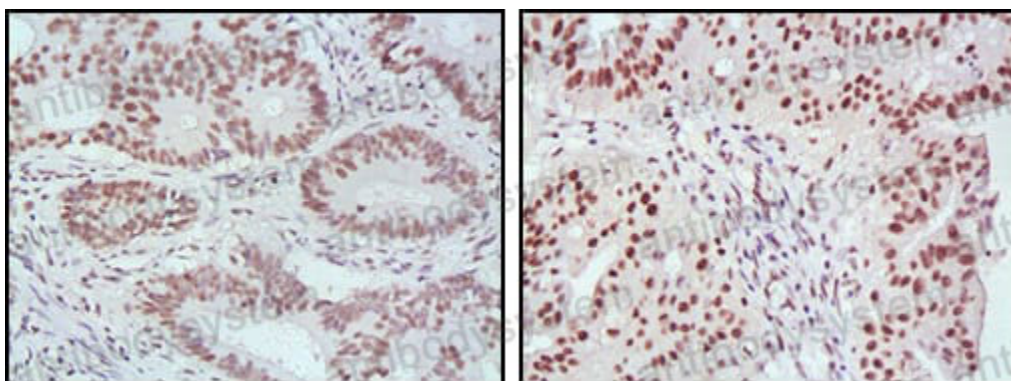
Data Image



Immunofluorescence

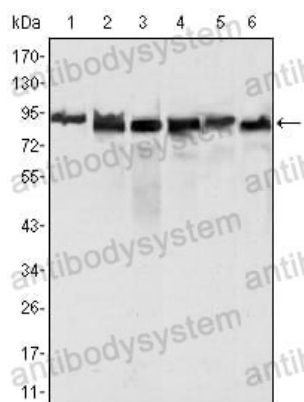
Confocal

Immunofluorescence analysis of HeLa cells using MLH1 mouse mAb (green), showing nuclear localization. Red: Actin filaments have been labeled with Alexa Fluor-555 phalloidin.



Immunohistochemical

Immunohistochemical analysis of paraffin-embedded human rectum cancer (left) and ovarian cancer (right) tissues, showing nuclear localization with DAB staining using MLH1 mouse mAb.



Western blot

Western blot analysis using MLH1 mouse mAb against HeLa (1), MCF-7 (2) and A549 (3), Jurkat (4), 2R75 (5) and COS (6) cell lysate.