

Anti-CD130/IL6ST/gp130 Antibody (R3K23)

Summary

Catalog No.	RHE25302
Clone ID	R3K23
Host species	Mouse
Tested applications	ELISA: 1:10000, FCM: 1:200-1:400, IF: 1:200-1:1000, IHC: 1:200-1:1000, WB: 1:500-1:2000
Species reactivity	Human, Monkey
Form	Liquid
Storage buffer	0.01M PBS, pH 7.4, 0.05% Sodium Azide.
Concentration	1 mg/ml
Purity	>95% as determined by SDS-PAGE.
Clonality	Monoclonal
Isotype	IgG1
Applications	ELISA, FCM, IF, IHC, WB
Target	IL-6 receptor subunit beta, CDw130, IL-6R-beta, Membrane glycoprotein 130, CD130, Oncostatin-M receptor subunit alpha, Interleukin-6 signal transducer, IL-6RB, IL-6R subunit beta, IL6ST, Interleukin-6 receptor subunit beta, gp130
Purification	Protein A/G purified from cell culture supernatant.
Endotoxin level	Please contact with the lab for this information.
Accession	P40189

Stability and Storage

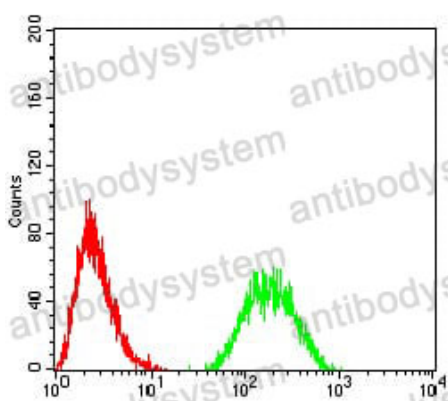
Use a manual defrost freezer and avoid repeated freeze-thaw cycles.

Store at 4°C short term (1-2 weeks). Store at -20°C 12 months. Store at -80°C long term.

Note

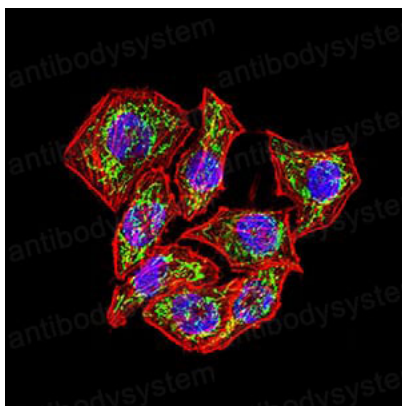
For research use only.

Data Image



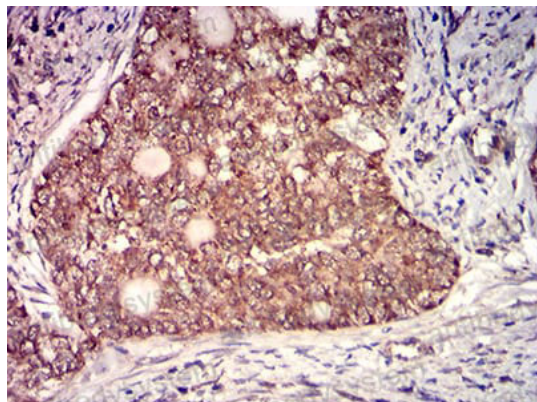
Flow Cytometry

Flow cytometric analysis of HL-60 cells using CD130 mouse mAb (green) and negative control (red).



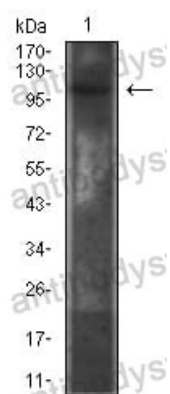
Immunofluorescence

Immunofluorescence analysis of Hela cells using CD130 mouse mAb (green). Blue: DRAQ5 fluorescent DNA dye. Red: Actin filaments have been labeled with Alexa Fluor- 555 phalloidin.



Immunohistochemical

Immunohistochemical analysis of paraffin-embedded human cervical cancer tissues using CD130 mouse mAb with DAB staining.



Western blot

Western blot analysis using CD130 mouse mAb against COS7 (1) cell lysate.