

Anti-CAPG Antibody (R3K22)

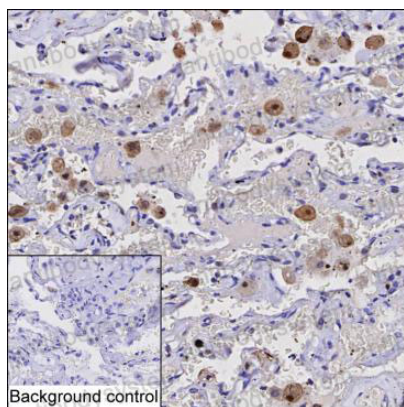
Summary

Catalog No.	RHE24902
Clone ID	R3K22
Host species	Mouse
Tested applications	IHC: 1:100-1:200, WB: 1:500-1:1000
Species reactivity	Human
Form	Liquid
Storage buffer	0.01M PBS, pH 7.4, 0.05% Sodium Azide.
Concentration	1 mg/ml
Purity	>95% as determined by SDS-PAGE.
Clonality	Monoclonal
Isotype	IgG1
Applications	IHC, WB
Target	AFCP, MCP, Macrophage-capping protein, Actin regulatory protein CAP-G, CAPG
Purification	Protein A/G purified from cell culture supernatant.
Endotoxin level	Please contact with the lab for this information.
Accession	P40121
Stability and Storage	Use a manual defrost freezer and avoid repeated freeze-thaw cycles. Store at 4°C short term (1-2 weeks). Store at -20°C 12 months. Store at -80°C long term.

Note

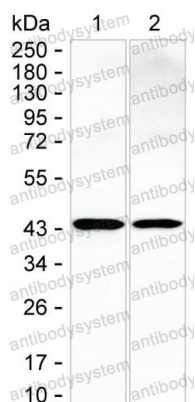
For research use only.

Data Image



Immunohistochemical

IHC-P analysis of lung tissue by CAPG antibody (RHE24902). IHC-P was performed using sections of the formalin-fixed paraffin-embedded lung tissue; Result: Macrophages are positively stained at the cytoplasm.



Western blot

Western blot analysis using CAPG mouse mAb against THP-1 lysate and U-937 lysate