

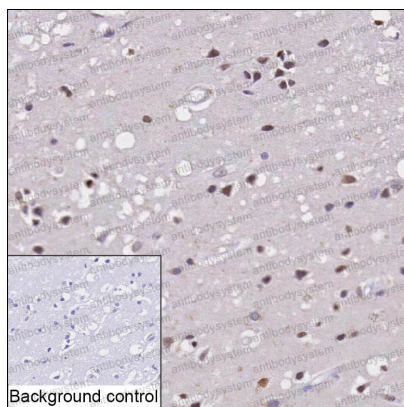
Anti-GDNF Antibody (R3K21)

Summary

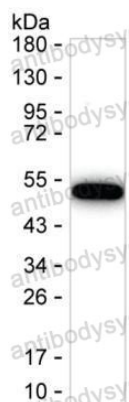
Catalog No.	RHE24802
Clone ID	R3K21
Host species	Mouse
Tested applications	IHC: 1:50-1:200, WB: 1:500-1:1000
Species reactivity	Human
Form	Liquid
Storage buffer	0.01M PBS, pH 7.4, 0.05% Sodium Azide.
Concentration	1 mg/ml
Purity	>95% as determined by SDS-PAGE.
Clonality	Monoclonal
Isotype	IgG2a
Applications	IHC, WB
Target	hGDNF, Astrocyte-derived trophic factor, Glial cell line-derived neurotrophic factor, ATF, GDNF
Purification	Protein A/G purified from cell culture supernatant.
Endotoxin level	Please contact with the lab for this information.
Accession	P39905
Stability and Storage	Use a manual defrost freezer and avoid repeated freeze-thaw cycles. Store at 4°C short term (1-2 weeks). Store at -20°C 12 months. Store at -80°C long term.

Note

For research use only.

Data Image**Immunohistochemical**

IHC-P analysis of brain tissue by GDNF antibody (RHE24802). IHC-P was performed using sections of the formalin-fixed paraffin-embedded brain tissue; Result: Neuronal cells and glial cells are positively stained at the nuclei.

**Western blot**

Result: RHE24802 can detect human GDNF by Western blotting.