

# Anti-FEN1 Antibody (R3K20)

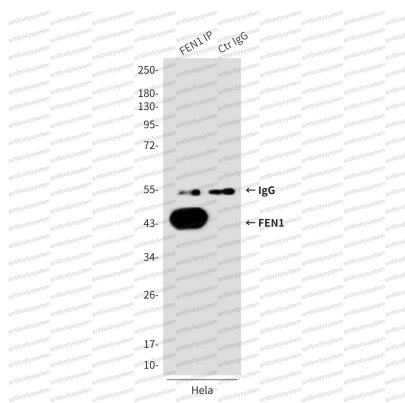
## Summary

---

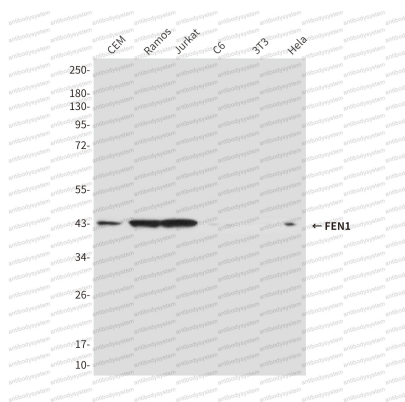
<b>Catalog No.</b>	RHE24403
<b>Clone ID</b>	R3K20
<b>Host species</b>	Mouse
<b>Tested applications</b>	IP: 1:20, WB: 1:500-1:1000
<b>Species reactivity</b>	Human, Mouse, Rat
<b>Form</b>	Liquid
<b>Storage buffer</b>	0.01M PBS, pH 7.4, 0.5% BSA, 0.05% Sodium Azide and 50% Glycerol.
<b>Concentration</b>	1 mg/ml
<b>Purity</b>	>95% as determined by SDS-PAGE.
<b>Clonality</b>	Monoclonal
<b>Isotype</b>	IgG1
<b>Applications</b>	IP, WB
<b>Target</b>	FEN-1, Maturation factor 1, hFEN-1, DNase IV, RAD2, FEN1, Flap endonuclease 1, MF1, Flap structure-specific endonuclease 1
<b>Purification</b>	Protein A/G purified from cell culture supernatant.
<b>Endotoxin level</b>	Please contact with the lab for this information.
<b>Accession</b>	P39748
<b>Stability and Storage</b>	Use a manual defrost freezer and avoid repeated freeze-thaw cycles. Store at 4°C short term (1-2 weeks). Store at -20°C 12 months. Store at -80°C long term.

**Note**

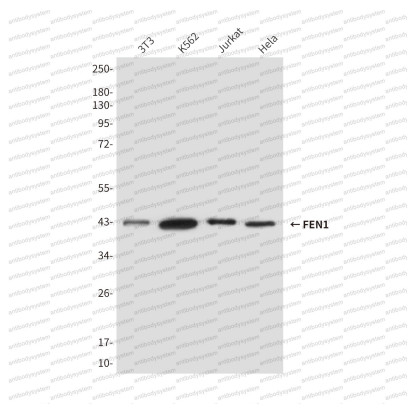
For research use only.

**Data Image****Immunoprecipitation**

Immunoprecipitation analysis of FEN1 in HeLa lysates using FEN1 antibody.

**Western blot**

Western blot analysis of FEN1 in HeLa, Jurkat, 3T3, C6, CEM and Ramos lysates using FEN1 antibody.



Western blot

Western blot analysis of FEN1 in HeLa, Jurkat, K562 and 3T3 lysates using FEN1 antibody.