

Anti-BRCA1 Antibody (R3K14)

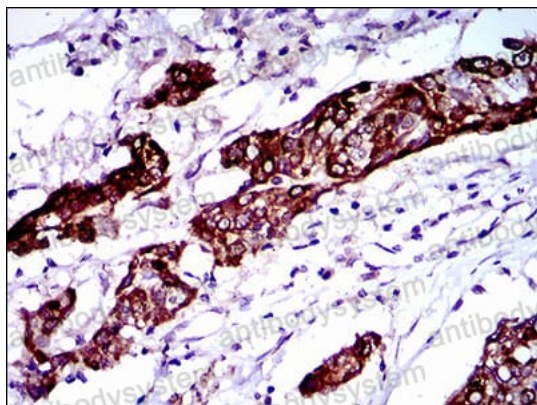
Summary

Catalog No.	RHE22301
Clone ID	R3K14
Host species	Mouse
Tested applications	ELISA: 1:10000, IHC: 1:200-1:1000
Species reactivity	Human
Form	Liquid
Storage buffer	0.01M PBS, pH 7.4, 0.05% Sodium Azide.
Concentration	1 mg/ml
Purity	>95% as determined by SDS-PAGE.
Clonality	Monoclonal
Isotype	IgG1
Applications	ELISA, IHC
Target	BRCA1, Breast cancer type 1 susceptibility protein, RING-type E3 ubiquitin transferase BRCA1, RING finger protein 53, RNF53
Purification	Protein A/G purified from cell culture supernatant.
Endotoxin level	Please contact with the lab for this information.
Accession	P38398
Stability and Storage	Use a manual defrost freezer and avoid repeated freeze-thaw cycles. Store at 4°C short term (1-2 weeks). Store at -20°C 12 months. Store at -80°C long term.

Note

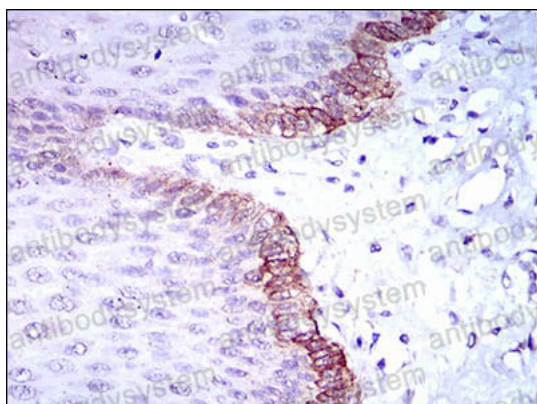
For research use only.

Data Image



Immunohistochemical

Immunohistochemical analysis of paraffin-embedded human esophagus cancer tissues using BRCA1 mouse mAb with DAB staining.



Immunohistochemical

Immunohistochemical analysis of paraffin-embedded human esophagus tissues using BRCA1 mouse mAb with DAB staining.