

Anti-LTBR Antibody (R3K09)

Summary

| | |
|----------------------------|---|
| Catalog No. | RHE19602 |
| Clone ID | R3K09 |
| Host species | Mouse |
| Tested applications | ELISA: 1:10000, FCM: 1:200-1:400, WB: 1:500-1:2000 |
| Species reactivity | Human, Mouse |
| Form | Liquid |
| Storage buffer | 0.01M PBS, pH 7.4, 0.05% Sodium Azide. |
| Concentration | 1 mg/ml |
| Purity | >95% as determined by SDS-PAGE. |
| Clonality | Monoclonal |
| Isotype | IgG2a |
| Applications | ELISA, FCM, WB |
| Target | Tumor necrosis factor receptor superfamily member 3, Lymphotoxin-beta receptor, TNFCR, TNF-RIII, Tumor necrosis factor receptor 2-related protein, TNFR3, LTBR, TNFRSF3, Tumor necrosis factor receptor type III, D12S370, TNFR-III, Tumor necrosis factor C receptor |
| Purification | Protein A/G purified from cell culture supernatant. |
| Endotoxin level | Please contact with the lab for this information. |
| Accession | P36941 |

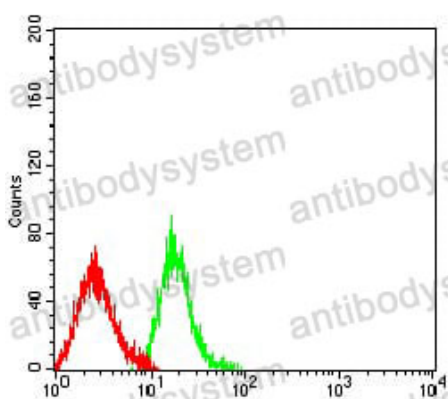
Stability and Storage

Use a manual defrost freezer and avoid repeated freeze-thaw cycles.

Store at 4°C short term (1-2 weeks). Store at -20°C 12 months. Store at -80°C long term.

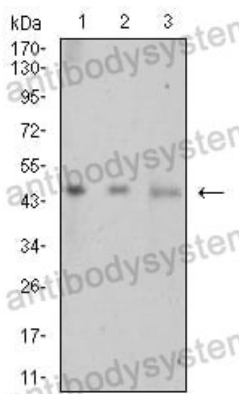
Note

For research use only.

Data Image

Flow Cytometry

Flow cytometric analysis of HL-60 cells using LTBR mouse mAb (green) and negative control (red).



Western blot

Western blot analysis using LTBR mouse mAb against Hela (1), NIH/3T3 (2), and HEK293 (3) cell lysate.