

Anti-MAP2K2 Antibody (R3K04)

Summary

Catalog No.	RHE17802
Clone ID	R3K04
Host species	Mouse
Tested applications	FCM: 1:200-1:400, IF: 1:200-1:1000, WB: 1:500-1:2000
Species reactivity	Human, Mouse, Rat
Form	Liquid
Storage buffer	0.01M PBS, pH 7.4, 0.05% Sodium Azide.
Concentration	1 mg/ml
Purity	>95% as determined by SDS-PAGE.
Clonality	Monoclonal
Isotype	IgG1
Applications	FCM, IF, WB
Target	MAP kinase kinase 2, MAPK/ERK kinase 2, ERK activator kinase 2, MAPKK 2, PRKMK2, MAP2K2, MEK 2, MEK2, MKK2, Dual specificity mitogen-activated protein kinase kinase 2
Purification	Protein A/G purified from cell culture supernatant.
Endotoxin level	Please contact with the lab for this information.
Accession	P36507

Stability and Storage

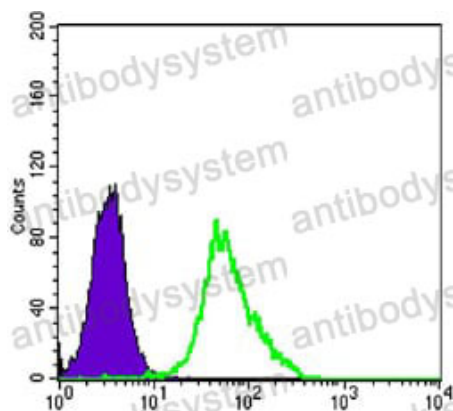
Use a manual defrost freezer and avoid repeated freeze-thaw cycles.

Store at 4°C short term (1-2 weeks). Store at -20°C 12 months. Store at -80°C long term.

Note

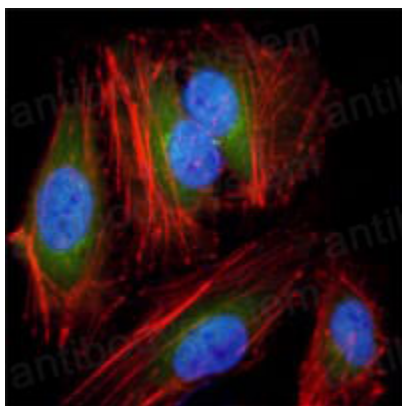
For research use only.

Data Image



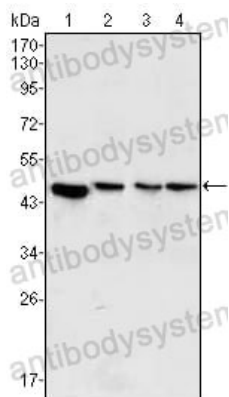
Flow Cytometry

Flow cytometric analysis of HeLa cells using anti-MAP2K2 mAb (green) and negative control (purple).



Immunofluorescence

Immunofluorescence analysis of HeLa cells using anti-MAP2K2 mAb (green). Red: Actin filaments have been labeled with DY-554 phalloidin. Blue: DRAQ5 fluorescent DNA dye.



Western blot

Western blot analysis using MAP2K2 mouse mAb against PC-12 (1), Jurkat (2), HeLa (3) and NIH/3T3 (4) cell lysate.