

Anti-CHI3L1 Antibody (R3K02)

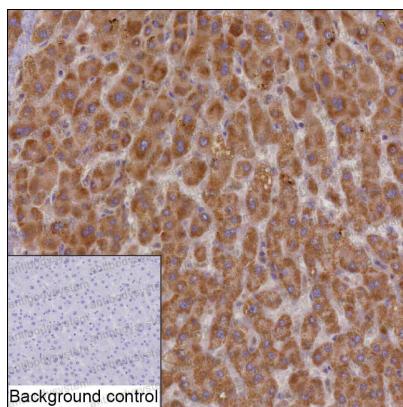
Summary

Catalog No.	RHE16902
Clone ID	R3K02
Host species	Mouse
Tested applications	IHC: 1:20-1:100
Species reactivity	Human
Form	Liquid
Storage buffer	0.01M PBS, pH 7.4, 0.05% Sodium Azide.
Concentration	1 mg/ml
Purity	>95% as determined by SDS-PAGE.
Clonality	Monoclonal
Isotype	IgG2b
Applications	IHC
Target	CHI3L1, GP-39, YKL-40, Chitinase-3-like protein 1, CGP-39, 39 kDa synovial protein, hCGP-39, Cartilage glycoprotein 39
Purification	Protein A/G purified from cell culture supernatant.
Endotoxin level	Please contact with the lab for this information.
Accession	P36222
Stability and Storage	Use a manual defrost freezer and avoid repeated freeze-thaw cycles. Store at 4°C short term (1-2 weeks). Store at -20°C 12 months. Store at -80°C long term.

Note

For research use only.

Data Image



Immunohistochemical

IHC-P analysis of liver tissue by CHI3L1 antibody (RHE16902). IHC-P was performed using sections of the formalin-fixed paraffin-embedded liver tissue; Result: Hepatocytes are positively stained at the cytoplasm.