

Anti-KRT2 Antibody (R3J97)

Summary

| | |
|----------------------------|--|
| Catalog No. | RHE16202 |
| Clone ID | R3J97 |
| Host species | Mouse |
| Tested applications | ELISA: 1:10000, FCM: 1:200-1:400, IF: 1:200-1:1000, IHC: 1:200-1:1000, WB: 1:500-1:2000 |
| Species reactivity | Human |
| Form | Liquid |
| Storage buffer | 0.01M PBS, pH 7.4, 0.05% Sodium Azide. |
| Concentration | 1 mg/ml |
| Purity | >95% as determined by SDS-PAGE. |
| Clonality | Monoclonal |
| Isotype | IgG2a |
| Applications | ELISA, FCM, IF, IHC, WB |
| Target | KRT2, Cytokeratin-2e, KRT2E, Type-II keratin Kb2, CK-2e, KRT2A, Keratin-2 epidermis, Keratin, type II cytoskeletal 2 epidermal, Epithelial keratin-2e, K2e, Keratin-2e |
| Purification | Protein A/G purified from cell culture supernatant. |
| Endotoxin level | Please contact with the lab for this information. |
| Accession | P35908 |

Stability and Storage

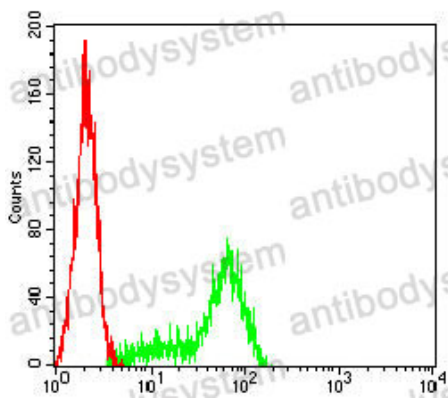
Use a manual defrost freezer and avoid repeated freeze-thaw cycles.

Store at 4°C short term (1-2 weeks). Store at -20°C 12 months. Store at -80°C long term.

Note

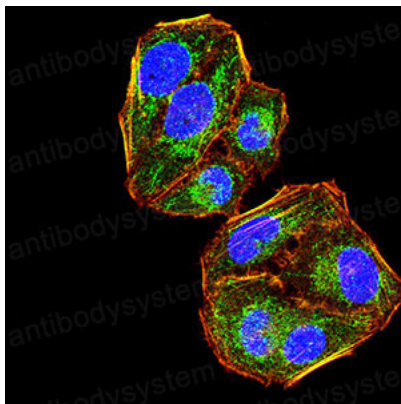
For research use only.

Data Image



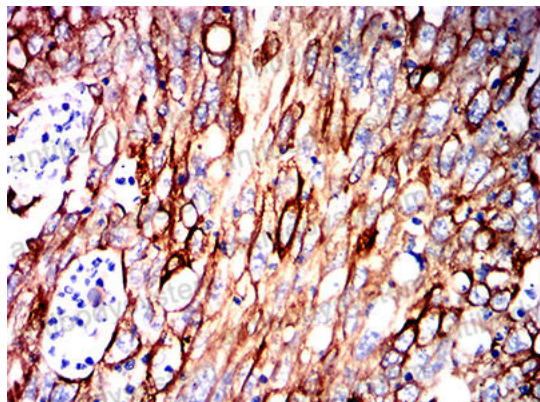
Flow Cytometry

Flow cytometric analysis of Hela cells using KRT2 mouse mAb (green) and negative control (red).



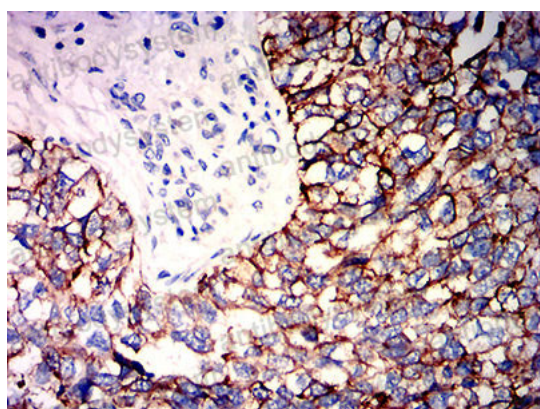
Immunofluorescence

Immunofluorescence analysis of Hela cells using KRT2 mouse mAb (green). Blue: DRAQ5 fluorescent DNA dye. Red: Actin filaments have been labeled with Alexa Fluor- 555 phalloidin.



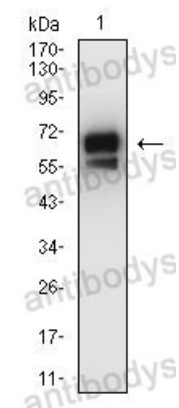
Immunohistochemical

Immunohistochemical analysis of paraffin-embedded human lung cancer tissues using KRT2 mouse mAb with DAB staining.



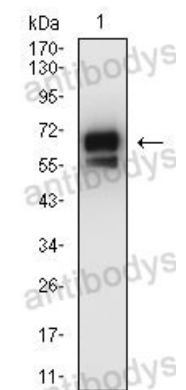
Immunohistochemical

Immunohistochemical analysis of paraffin-embedded human bladder cancer tissues using KRT2 mouse mAb with DAB staining.



Western blot

Western blot analysis using KRT2 mouse mAb against A431 (1) cell lysate.



Western blot

Western blot analysis using KRT2 mouse mAb against A431 (1) cell lysate.