

Anti-MYH9 Antibody (R3J79)

Summary

Catalog No.	RHE13203
Clone ID	R3J79
Host species	Mouse
Tested applications	IHC: 1:50-1:250, IP: 1:100-1:200, WB: 1:500-1:1000
Species reactivity	Human
Form	Liquid
Storage buffer	0.01M PBS, pH 7.4, 0.05% Sodium Azide.
Concentration	1 mg/ml
Purity	>95% as determined by SDS-PAGE.
Clonality	Monoclonal
Isotype	IgG2b
Applications	IHC, IP, WB
Target	NMMHC-IIA, Non-muscle myosin heavy chain IIa, Cellular myosin heavy chain, type A, Myosin heavy chain 9, NMMHC II-a, Non-muscle myosin heavy chain A, Myosin-9, MYH9, NMMHC-A, Myosin heavy chain, non-muscle IIa
Purification	Protein A/G purified from cell culture supernatant.
Endotoxin level	Please contact with the lab for this information.
Accession	P35579

Stability and Storage

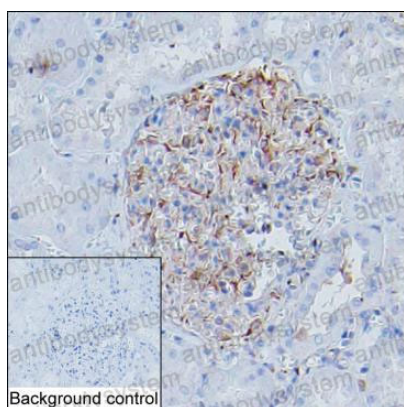
Use a manual defrost freezer and avoid repeated freeze-thaw cycles.

Store at 4°C short term (1-2 weeks). Store at -20°C 12 months. Store at -80°C long term.

Note

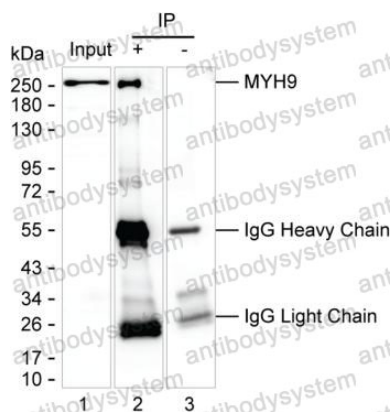
For research use only.

Data Image



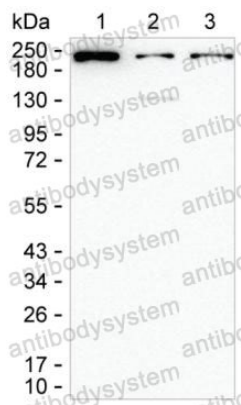
Immunohistochemical

IHC-P analysis of kidney tissue by MYH9 antibody (RHE13203). IHC-P was performed using sections of the formalin-fixed paraffin-embedded kidney tissue; Result: Cells in glomeruli are positively stained at the cytoplasm.



Immunoprecipitation

Lane 1: HeLa lysate; Lane 2: MYH9 immunoprecipitated from HeLa lysate by RHE13203; Lane 3: The same as Lane 2 but use IgG isotype control antibody; Result: RHE13203 can immunoprecipitate MYH9;



Western blot

Lane 1: 15 μ g of HeLa lysate; Lane 2: 15 μ g of HT-29 lysate; Lane 3: 15 μ g of A-431 lysate; Result: RHE13203 can detect MYH9 by Western blotting;