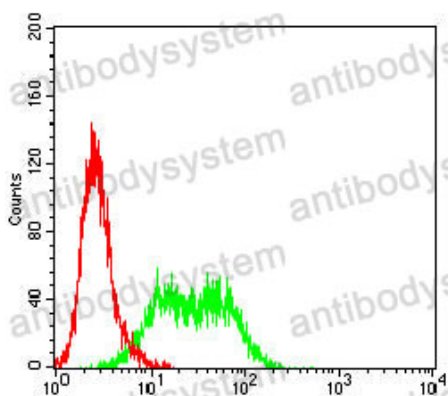


Anti-KRT9 Antibody (R3J77)

Summary

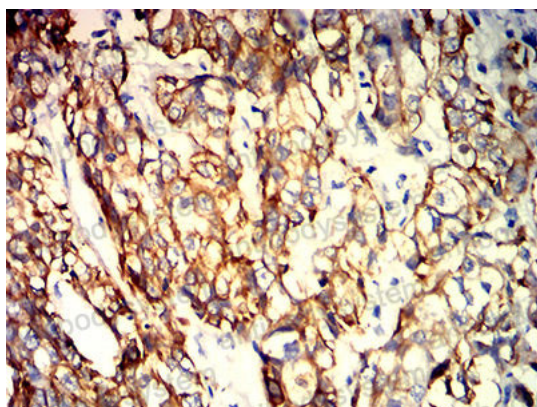
Catalog No.	RHE12103
Clone ID	R3J77
Host species	Mouse
Tested applications	ELISA: 1:10000, FCM: 1:200-1:400, IHC: 1:200-1:1000, WB: 1:500-1:2000
Species reactivity	Human, Mouse, Rat
Form	Liquid
Storage buffer	0.01M PBS, pH 7.4, 0.05% Sodium Azide.
Concentration	1 mg/ml
Purity	>95% as determined by SDS-PAGE.
Clonality	Monoclonal
Isotype	IgG2b
Applications	ELISA, FCM, IHC, WB
Target	Cytokeratin-9, K9, Keratin-9, CK-9, KRT9, Keratin, type I cytoskeletal 9
Purification	Protein A/G purified from cell culture supernatant.
Endotoxin level	Please contact with the lab for this information.
Accession	P35527
Stability and Storage	Use a manual defrost freezer and avoid repeated freeze-thaw cycles. Store at 4°C short term (1-2 weeks). Store at -20°C 12 months. Store at -80°C long term.
Note	For research use only.

Data Image



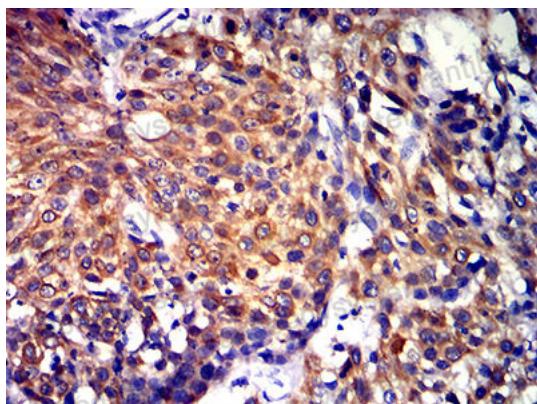
Flow Cytometry

Flow cytometric analysis of A431 cells using KRT9 mouse mAb (green) and negative control (red).



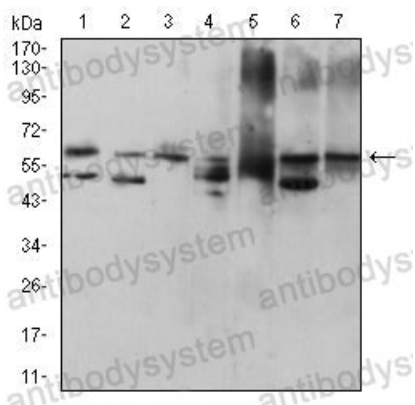
Immunohistochemical

Immunohistochemical analysis of paraffin-embedded human bladder cancer tissues using KRT9 mouse mAb with DAB staining.



Immunohistochemical

Immunohistochemical analysis of paraffin-embedded human esophageal cancer tissues using KRT9 mouse mAb with DAB staining.



Western blot

Western blot analysis using KRT9 mouse mAb against HepG2 (1), MCF-7 (2), NIH/3T3 (3), rat heart (4), mouse heart (5), Hela (6), and HUVEC (7) cell lysate.