

Anti-LSP1 Antibody (R3J50)

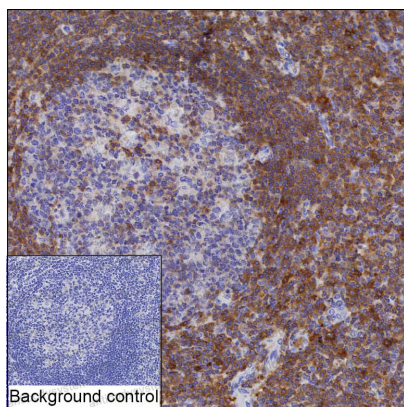
Summary

| | |
|------------------------------|---|
| Catalog No. | RHE02703 |
| Clone ID | R3J50 |
| Host species | Mouse |
| Tested applications | IHC: 1:50-1:250 |
| Species reactivity | Human |
| Form | Liquid |
| Storage buffer | 0.01M PBS, pH 7.4, 0.05% Sodium Azide. |
| Concentration | 1 mg/ml |
| Purity | >95% as determined by SDS-PAGE. |
| Clonality | Monoclonal |
| Isotype | IgG1 |
| Applications | IHC |
| Target | 52 kDa phosphoprotein, 47 kDa actin-binding protein, pp52, Lymphocyte-specific antigen WP34, Lymphocyte-specific protein 1, LSP1, WP34 |
| Purification | Protein A/G purified from cell culture supernatant. |
| Endotoxin level | Please contact with the lab for this information. |
| Accession | P33241 |
| Stability and Storage | Use a manual defrost freezer and avoid repeated freeze-thaw cycles. Store at 4°C short term (1-2 weeks). Store at -20°C 12 months. Store at -80°C long term. |

Note

For research use only.

Data Image



Immunohistochemical

IHC-P analysis of tonsil tissue by LSP1 antibody (RHE02703). IHC-P was performed using sections of the formalin-fixed paraffin-embedded tonsil tissue; Result: A part of germinal center cells and non-germinal center cells are positively stained at the cytoplasm and cell membrane.