

Anti-CD197/CCR7 Antibody (R3J35)

Summary

| | |
|----------------------------|--|
| Catalog No. | RHD99503 |
| Clone ID | R3J35 |
| Host species | Mouse |
| Tested applications | ELISA: 1:10000, FCM: 1:200-1:400, WB: 1:500-1:2000 |
| Species reactivity | Human |
| Form | Liquid |
| Storage buffer | 0.01M PBS, pH 7.4, 0.05% Sodium Azide. |
| Concentration | 1 mg/ml |
| Purity | >95% as determined by SDS-PAGE. |
| Clonality | Monoclonal |
| Isotype | IgG1 |
| Applications | ELISA, FCM, WB |
| Target | CDw197, EVI1, CMKBR7, CCR7, C-C CKR-7, CD197, CCR-7, Epstein-Barr virus-induced G-protein coupled receptor 1, MIP-3 beta receptor, EBI1, CC-CKR-7, BLR2, EBV-induced G-protein coupled receptor 1, C-C chemokine receptor type 7 |
| Purification | Protein A/G purified from cell culture supernatant. |
| Endotoxin level | Please contact with the lab for this information. |
| Accession | P32248 |

Stability and Storage

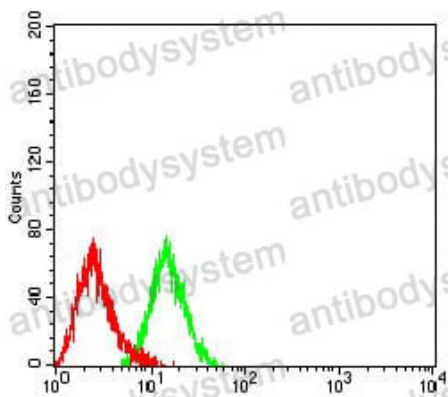
Use a manual defrost freezer and avoid repeated freeze-thaw cycles.

Store at 4°C short term (1-2 weeks). Store at -20°C 12 months. Store at -80°C long term.

Note

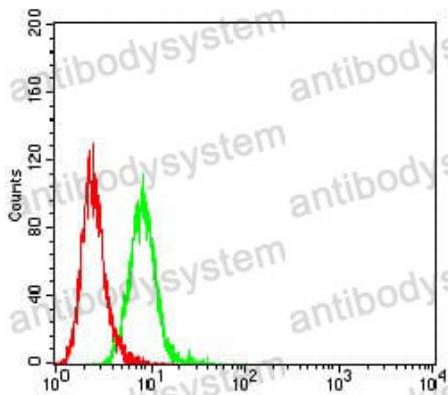
For research use only.

Data Image



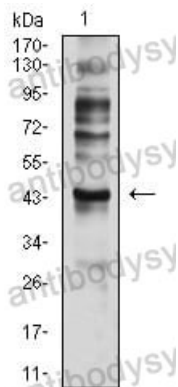
Flow Cytometry

Flow cytometric analysis of HL-60 cells using CD197 mouse mAb (green) and negative control (red).



Flow Cytometry

Flow cytometric analysis of K562 cells using CD197 mouse mAb (green) and negative control (red).



Western blot

Western blot analysis using CD197 mouse mAb against C6 (1) cell lysate.