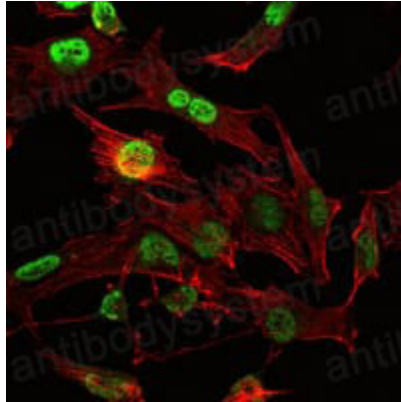


Anti-OTX2 Antibody (R3J32)

Summary

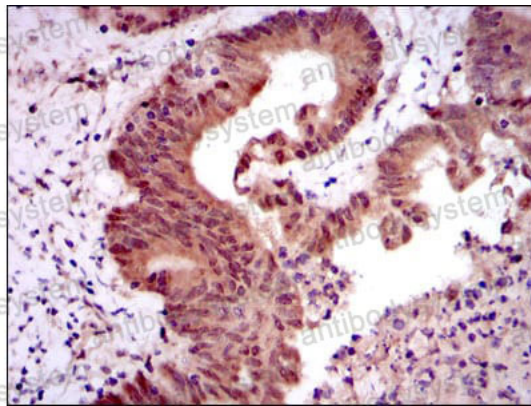
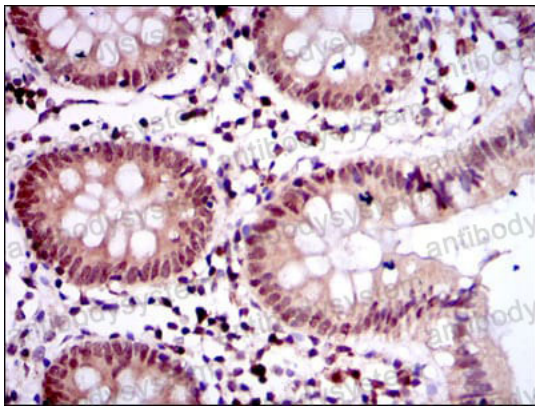
Catalog No.	RHD99101
Clone ID	R3J32
Host species	Mouse
Tested applications	ELISA: 1:10000, IF: 1:200-1:1000, IHC: 1:200-1:1000, WB: 1:500-1:2000
Species reactivity	Human
Form	Liquid
Storage buffer	0.01M PBS, pH 7.4, 0.05% Sodium Azide.
Concentration	1 mg/ml
Purity	>95% as determined by SDS-PAGE.
Clonality	Monoclonal
Isotype	IgG1
Applications	ELISA, IF, IHC, WB
Target	Orthodenticle homolog 2, OTX2, Homeobox protein OTX2
Purification	Protein A/G purified from cell culture supernatant.
Endotoxin level	Please contact with the lab for this information.
Accession	P32243
Stability and Storage	Use a manual defrost freezer and avoid repeated freeze-thaw cycles. Store at 4°C short term (1-2 weeks). Store at -20°C 12 months. Store at -80°C long term.
Note	For research use only.

Data Image



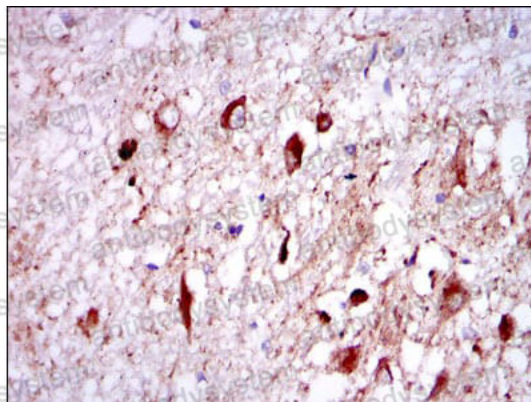
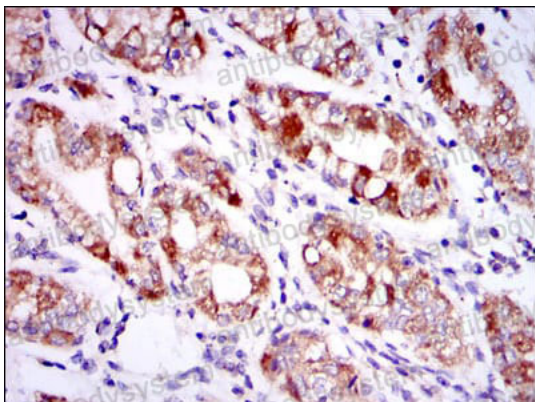
Immunofluorescence

Immunofluorescence analysis of U251 cells using OTX2 mouse mAb (green). Red: Actin filaments have been labeled with Alexa Fluor-555 phalloidin.



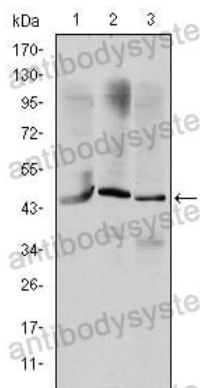
Immunohistochemical

Immunohistochemical analysis of paraffin-embedded human colon tissues (left) and colon cancer tissues (right) using OTX2 mouse mAb with DAB staining.



Immunohistochemical

Immunohistochemical analysis of paraffin-embedded human stomach tissues (left) and brain tissues (right) using OTX2 mouse mAb with DAB staining.



Western blot

Western blot analysis
using OTX2 mouse mAb
against HepG2 (1),
Jurkat (2), and NTERA-2
(3) cell lysate.