

Anti-OTX2 Antibody (R3J31)

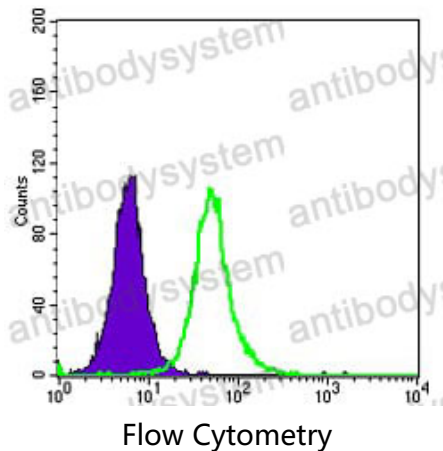
Summary

Catalog No.	RHD99102
Clone ID	R3J31
Host species	Mouse
Tested applications	ELISA: 1:10000, FCM: 1:200-1:400, IF: 1:200-1:1000, IHC: 1:200-1:1000, WB: 1:500-1:2000
Species reactivity	Human, Mouse, Rat, Rabbit, Monkey
Form	Liquid
Storage buffer	0.01M PBS, pH 7.4, 0.05% Sodium Azide.
Concentration	1 mg/ml
Purity	>95% as determined by SDS-PAGE.
Clonality	Monoclonal
Isotype	IgG1
Applications	ELISA, FCM, IF, IHC, WB
Target	Orthodenticle homolog 2, OTX2, Homeobox protein OTX2
Purification	Protein A/G purified from cell culture supernatant.
Endotoxin level	Please contact with the lab for this information.
Accession	P32243
Stability and Storage	Use a manual defrost freezer and avoid repeated freeze-thaw cycles. Store at 4°C short term (1-2 weeks). Store at -20°C 12 months. Store at -80°C long term.

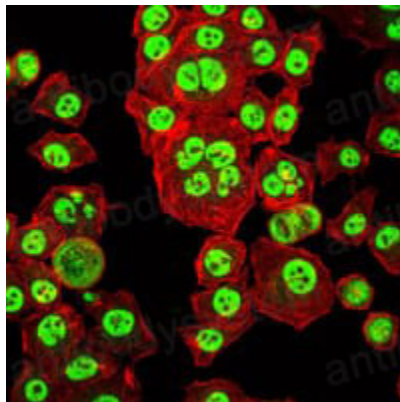
Note

For research use only.

Data Image

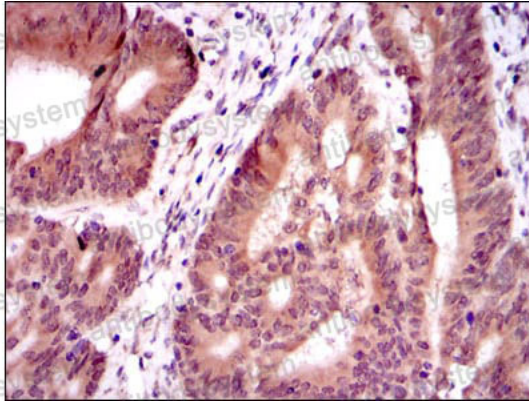
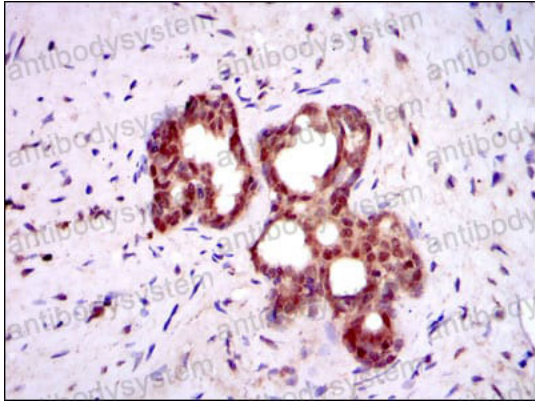


Flow cytometric analysis of HepG2 cells using OTX2 mouse mAb (green) and negative control (purple).



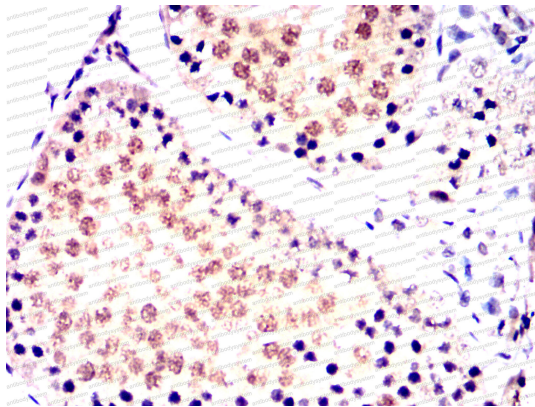
Immunofluorescence

Immunofluorescence analysis of HepG2 cells using OTX2 mouse mAb (green). Red: Actin filaments have been labeled with Alexa Fluor-555 phalloidin.



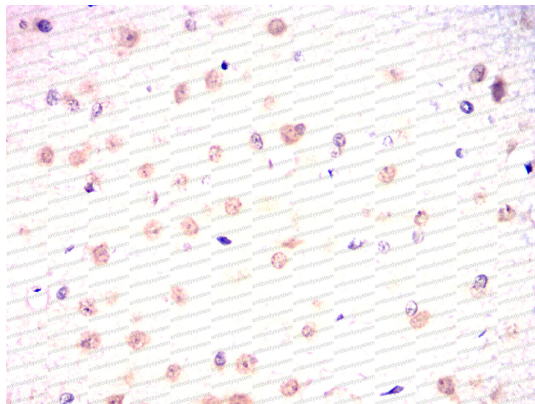
Immunohistochemical analysis of paraffin-embedded human prostate tissues (left) and colon cancer tissues (right) using OTX2 mouse mAb with DAB staining.

Immunohistochemical



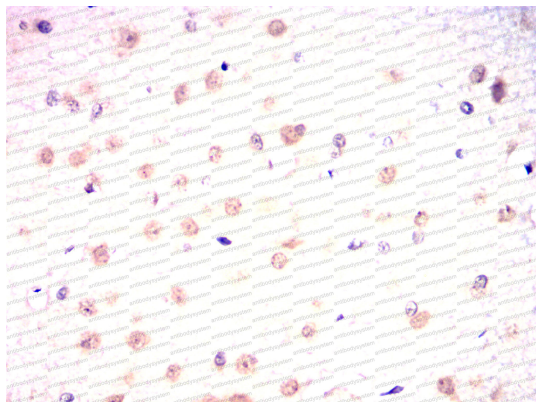
Immunohistochemical analysis of paraffin-embedded Mouse testis using OTX2 mouse mAb with DAB staining.

Immunohistochemical



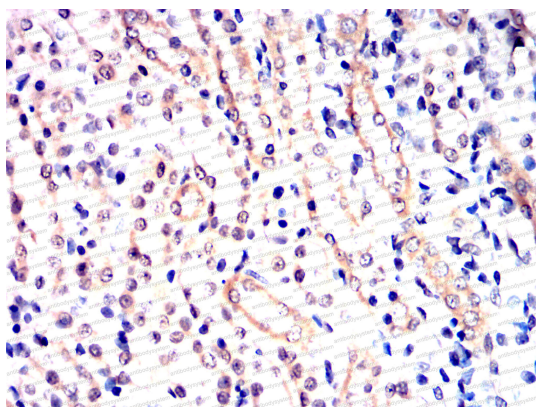
Immunohistochemical analysis of paraffin-embedded Rat brain using OTX2 mouse mAb with DAB staining.

Immunohistochemical



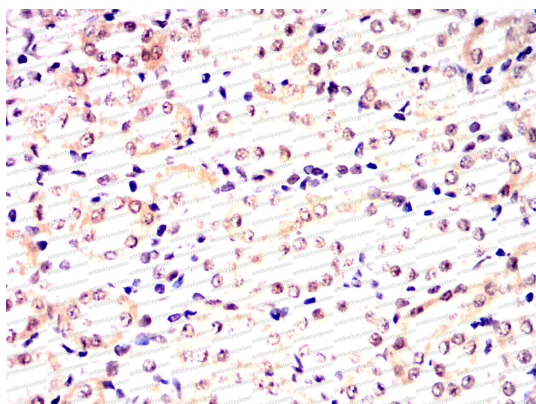
Immunohistochemical

Immunohistochemical analysis of paraffin-embedded Rat brain using OTX2 mouse mAb with DAB staining.



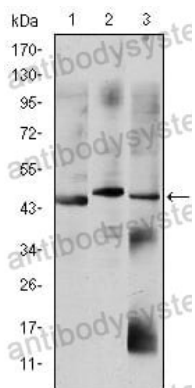
Immunohistochemical

Immunohistochemical analysis of paraffin-embedded Rat kidney using OTX2 mouse mAb with DAB staining.



Immunohistochemical

Immunohistochemical analysis of paraffin-embedded Rabbit kidney using OTX2 mouse mAb with DAB staining.



Western blot

Western blot analysis
using OTX2 mouse mAb
against HepG2 (1),
Jurkat (2), and NTERA-2
(3) cell lysate.