

Anti-UQCRC1/Core protein I Antibody (R3J24)

Summary

Catalog No.	RHD96801
Clone ID	R3J24
Host species	Mouse
Tested applications	ELISA: 1:10000, FCM: 1:200-1:400, IF: 1:50-1:200, IHC: 1:200-1:1000, WB: 1:500-1:2000
Species reactivity	Human, Mouse, Rat
Form	Liquid
Storage buffer	0.01M PBS, pH 7.4, 0.05% Sodium Azide.
Concentration	1 mg/ml
Purity	>95% as determined by SDS-PAGE.
Clonality	Monoclonal
Isotype	IgG1
Applications	ELISA, FCM, IF, IHC, WB
Target	UQCRC1, Cytochrome b-c1 complex subunit 1, mitochondrial, Ubiquinol-cytochrome-c reductase complex core protein 1, Core protein I, Complex III subunit 1
Purification	Protein A/G purified from cell culture supernatant.
Endotoxin level	Please contact with the lab for this information.
Accession	P31930

Stability and Storage

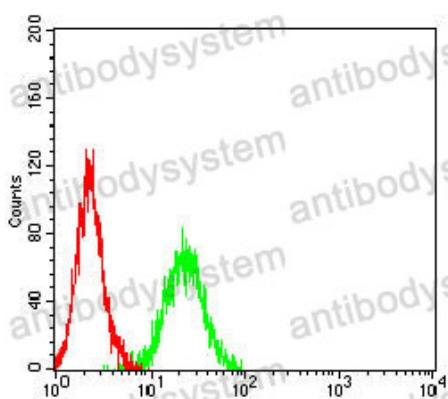
Use a manual defrost freezer and avoid repeated freeze-thaw cycles.

Store at 4°C short term (1-2 weeks). Store at -20°C 12 months. Store at -80°C long term.

Note

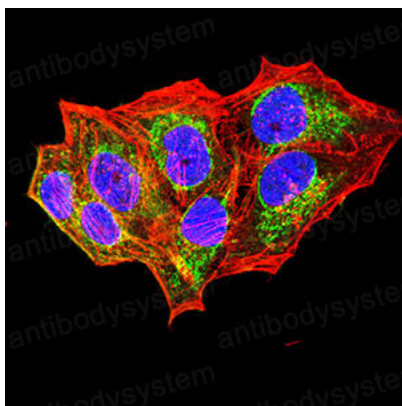
For research use only.

Data Image



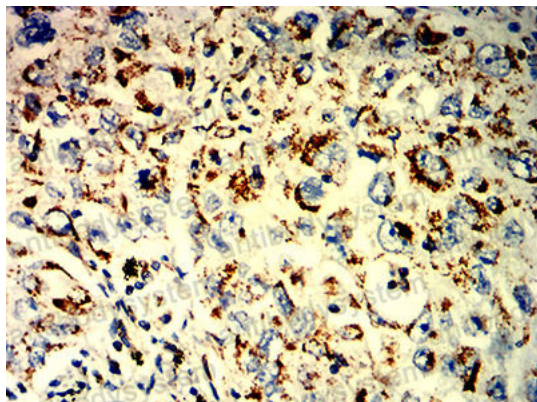
Flow Cytometry

Flow cytometric analysis of Jurkat cells using UQCRC1 mouse mAb (green) and negative control (red).



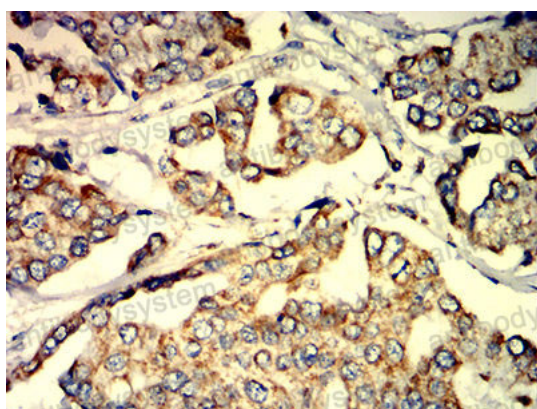
Immunofluorescence

Immunofluorescence analysis of HeLa cells using UQCRC1 mouse mAb (green). Blue: DRAQ5 fluorescent DNA dye. Red: Actin filaments have been labeled with Alexa Fluor- 555 phalloidin.



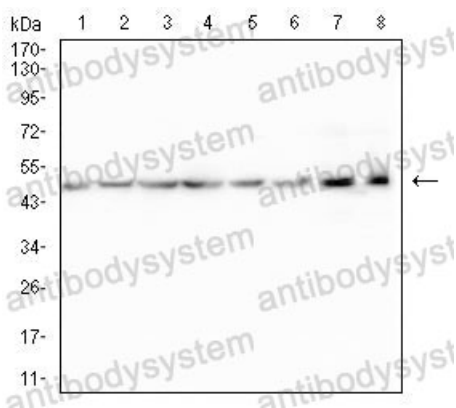
Immunohistochemical

Immunohistochemical analysis of paraffin-embedded human lung cancer tissues using UQCRC1 mouse mAb with DAB staining.



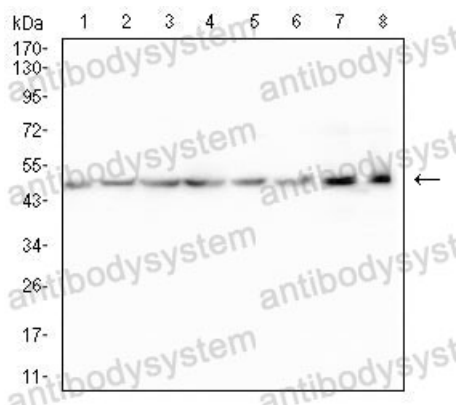
Immunohistochemical

Immunohistochemical analysis of paraffin-embedded human breast cancer tissues using UQCRC1 mouse mAb with DAB staining.



Western blot

Western blot analysis using UQCRC1 mouse mAb against Hela (1), A431 (2), HepG2 (3), HEK293 (4), PC-3 (5), SH-SY5Y (6), mouse brain (7), and rat brain (8) cell lysate.



Western blot

Western blot analysis using UQCRC1 mouse mAb against Hela (1), A431 (2), HepG2 (3), HEK293 (4), PC-3 (5), SH-SY5Y (6), mouse brain (7), and rat brain (8) cell lysate.