

Anti-AKT2 Antibody (R3J20)

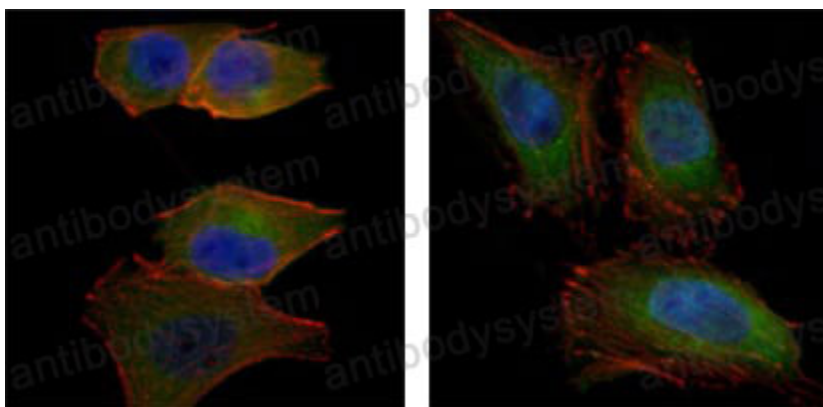
Summary

Catalog No.	RHD96601
Clone ID	R3J20
Host species	Mouse
Tested applications	IF: 1:200-1:1000, IHC: 1:200-1:1000, WB: 1:500-1:2000
Species reactivity	Human, Rat, Monkey
Form	Liquid
Storage buffer	0.01M PBS, pH 7.4, 0.05% Sodium Azide.
Concentration	1 mg/ml
Purity	>95% as determined by SDS-PAGE.
Clonality	Monoclonal
Isotype	IgG2b
Applications	IF, IHC, WB
Target	PKB beta, Protein kinase Akt-2, AKT2, Protein kinase B beta, RAC-beta serine/threonine-protein kinase, RAC-PK-beta
Purification	Protein A/G purified from cell culture supernatant.
Endotoxin level	Please contact with the lab for this information.
Accession	P31751
Stability and Storage	Use a manual defrost freezer and avoid repeated freeze-thaw cycles. Store at 4°C short term (1-2 weeks). Store at -20°C 12 months. Store at -80°C long term.

Note

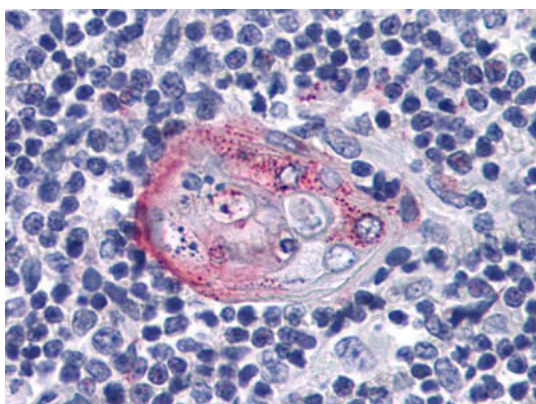
For research use only.

Data Image



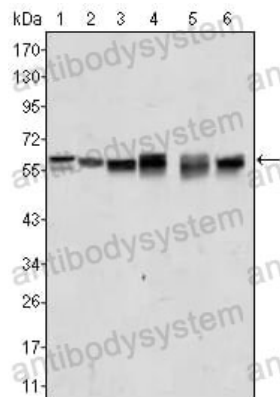
Immunofluorescence analysis of PANC-1 (left) and Hela (right) cells using AKT2 mouse mAb (green). Blue: DRAQ5 fluorescent DNA dye. Red: Actin filaments have been labeled with Alexa Fluor-555 phalloidin.

Immunofluorescence



Immunohistochemical analysis of paraffin-embedded human Thymus tissues using anti-AKT2 mAb

Immunohistochemical



Western blot

Western blot analysis using AKT2 mouse mAb against A431 (1), Jurkat (2), HEK293 (3), A549 (4), MCF-7 (5) and PC-12 (6) cell lysate.