

Anti-CDC25C Antibody (R3H99)

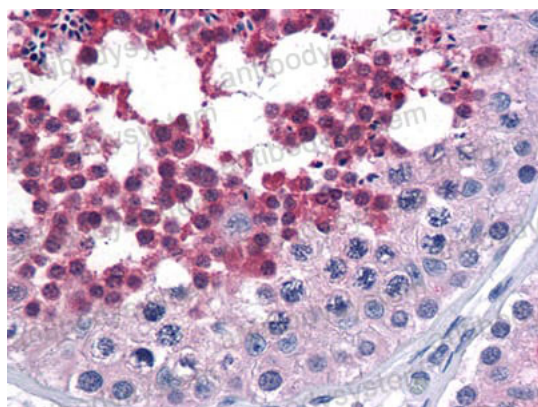
Summary

Catalog No.	RHD88501
Clone ID	R3H99
Host species	Mouse
Tested applications	IHC: 1:200-1:1000, WB: 1:500-1:2000
Species reactivity	Human
Form	Liquid
Storage buffer	0.01M PBS, pH 7.4, 0.05% Sodium Azide.
Concentration	1 mg/ml
Purity	>95% as determined by SDS-PAGE.
Clonality	Monoclonal
Isotype	IgG1
Applications	IHC, WB
Target	M-phase inducer phosphatase 3, Dual specificity phosphatase Cdc25C, CDC25C
Purification	Protein A/G purified from cell culture supernatant.
Endotoxin level	Please contact with the lab for this information.
Accession	P30307
Stability and Storage	Use a manual defrost freezer and avoid repeated freeze-thaw cycles. Store at 4°C short term (1-2 weeks). Store at -20°C 12 months. Store at -80°C long term.

Note

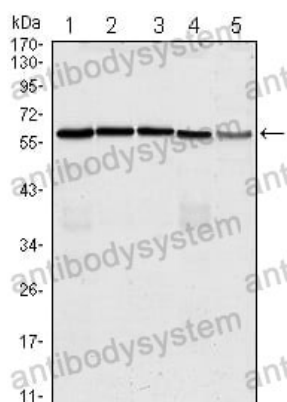
For research use only.

Data Image



Immunohistochemical

Immunohistochemical analysis of paraffin-embedded human Testis tissues using anti-CDC25C mouse mAb



Western blot

Western blot analysis using anti-CDC25C mAb against Hela (1), K562 (2), PC-3 (3), HEK293 (4) and Raw264.7 (5) cell lysate.