

Anti-CDC25A Antibody (R3H98)

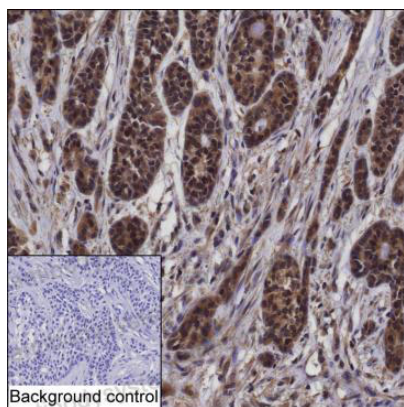
Summary

Catalog No.	RHD88301
Clone ID	R3H98
Host species	Mouse
Tested applications	IHC: 1:100-1:200
Species reactivity	Human
Form	Liquid
Storage buffer	0.01M PBS, pH 7.4, 0.05% Sodium Azide.
Concentration	1 mg/ml
Purity	>95% as determined by SDS-PAGE.
Clonality	Monoclonal
Isotype	IgG1
Applications	IHC
Target	Dual specificity phosphatase Cdc25A, M-phase inducer phosphatase 1, CDC25A
Purification	Protein A/G purified from cell culture supernatant.
Endotoxin level	Please contact with the lab for this information.
Accession	P30304
Stability and Storage	Use a manual defrost freezer and avoid repeated freeze-thaw cycles. Store at 4°C short term (1-2 weeks). Store at -20°C 12 months. Store at -80°C long term.

Note

For research use only.

Data Image



Immunohistochemical

IHC-P analysis of breast cancer tissue by CDC25A antibody (RHD88301). IHC-P was performed using sections of the formalin-fixed paraffin-embedded breast cancer tissue; Result: Tumor cells are positively stained at the cytoplasm and nuclei.