

Anti-SHC1 Antibody (R3H76)

Summary

Catalog No.	RHD82901
Clone ID	R3H76
Host species	Mouse
Tested applications	ELISA: 1:10000, FCM: 1:200-1:400, IF: 1:200-1:1000, WB: 1:500-1:2000
Species reactivity	Human, Mouse
Form	Liquid
Storage buffer	0.01M PBS, pH 7.4, 0.05% Sodium Azide.
Concentration	1 mg/ml
Purity	>95% as determined by SDS-PAGE.
Clonality	Monoclonal
Isotype	IgG1
Applications	ELISA, FCM, IF, WB
Target	SH2 domain protein C1, SHC, SHC-transforming protein 1, Src homology 2 domain-containing-transforming protein C1, SHCA, SHC-transforming protein 3, SHC-transforming protein A, SHC1
Purification	Protein A/G purified from cell culture supernatant.
Endotoxin level	Please contact with the lab for this information.
Accession	P29353

Stability and Storage

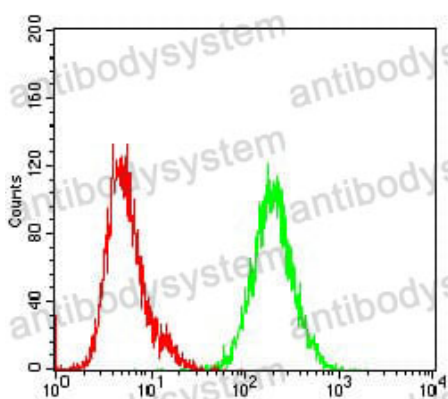
Use a manual defrost freezer and avoid repeated freeze-thaw cycles.

Store at 4°C short term (1-2 weeks). Store at -20°C 12 months. Store at -80°C long term.

Note

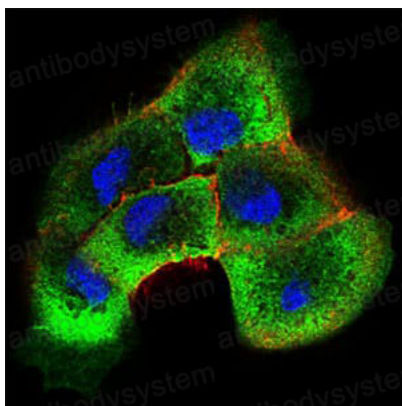
For research use only.

Data Image



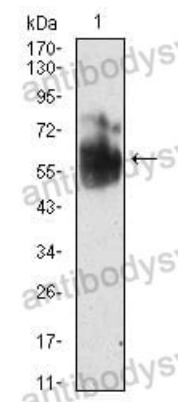
Flow Cytometry

Flow cytometric analysis of NIH/3T3 cells using SHC1 mouse mAb (green) and negative control (red).



Immunofluorescence

Immunofluorescence analysis of A431 cells using SHC1 mouse mAb (green). Blue: DRAQ5 fluorescent DNA dye. Red: Actin filaments have been labeled with Alexa Fluor-555 phalloidin.



Western blot

Western blot analysis using SHC1 mouse mAb against NIH/3T3 cell lysate.