

# Anti-PTPN6 Antibody (R3H75)

## Summary

---

<b>Catalog No.</b>	RHD82804
<b>Clone ID</b>	R3H75
<b>Host species</b>	Mouse
<b>Tested applications</b>	IP: 1:20, WB: 1:500-1:1000
<b>Species reactivity</b>	Human
<b>Form</b>	Liquid
<b>Storage buffer</b>	0.01M PBS, pH 7.4, 0.5% BSA, 0.05% Sodium Azide and 50% Glycerol.
<b>Concentration</b>	1 mg/ml
<b>Purity</b>	>95% as determined by SDS-PAGE.
<b>Clonality</b>	Monoclonal
<b>Isotype</b>	IgG2a
<b>Applications</b>	IP, WB
<b>Target</b>	HCP, PTPN6, PTP1C, Hematopoietic cell protein-tyrosine phosphatase, SH-PTP1, Protein-tyrosine phosphatase SHP-1, Protein-tyrosine phosphatase 1C, Tyrosine-protein phosphatase non-receptor type 6, PTP-1C
<b>Purification</b>	Protein A/G purified from cell culture supernatant.
<b>Endotoxin level</b>	Please contact with the lab for this information.
<b>Accession</b>	P29350

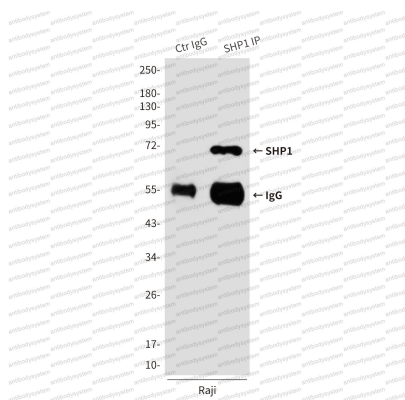
**Stability and Storage**

Use a manual defrost freezer and avoid repeated freeze-thaw cycles.

Store at 4°C short term (1-2 weeks). Store at -20°C 12 months. Store at -80°C long term.

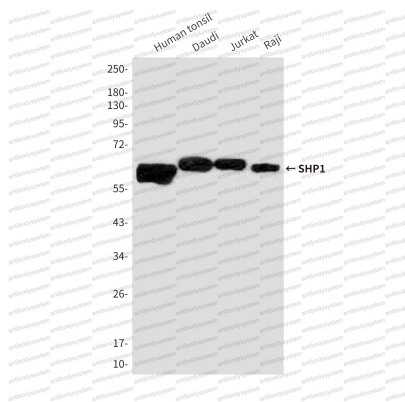
**Note**

For research use only.

**Data Image**

**Immunoprecipitation**

Immunoprecipitation analysis of SHP1 in Raji lysates using SHP1 antibody.



**Western blot**

Western blot analysis of SHP1 in Human tonsil, Daudi, Jurkat and Raji lysates using SHP1 antibody.