

Anti-EPHB2 Antibody (R3H73)

Summary

Catalog No.	RHD82702
Clone ID	R3H73
Host species	Mouse
Tested applications	IF: 1:200-1:1000
Species reactivity	Human
Form	Liquid
Storage buffer	0.01M PBS, pH 7.4, 0.05% Sodium Azide.
Concentration	1 mg/ml
Purity	>95% as determined by SDS-PAGE.
Clonality	Monoclonal
Isotype	IgG2b
Applications	IF
Target	EPHT3, EPTH3, ERK, Developmentally-regulated Eph-related tyrosine kinase, Tyrosine-protein kinase receptor EPH-3, hEK5, Ephrin type-B receptor 2, Tyrosine-protein kinase TYRO5, EK5, HEK5, EPHB2, ELK-related tyrosine kinase, TYRO5, Renal carcinoma antigen NY-REN-47, EPH tyrosine kinase 3, DRT, EPH-like kinase 5
Purification	Protein A/G purified from cell culture supernatant.
Endotoxin level	Please contact with the lab for this information.
Accession	P29323

Stability and Storage

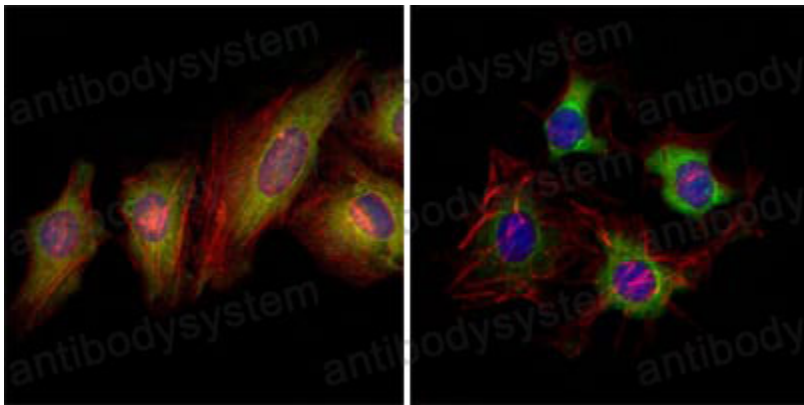
Use a manual defrost freezer and avoid repeated freeze-thaw cycles.

Store at 4°C short term (1-2 weeks). Store at -20°C 12 months. Store at -80°C long term.

Note

For research use only.

Data Image



Immunofluorescence

Immunofluorescence analysis of Hela (left) and HepG2 (right) cells using EphB2 mouse mAb (green). Red: Actin filaments have been labeled with DY-554 phalloidin. Blue: DRAQ5 fluorescent DNA dye.