

Anti-EPHA2 Antibody (R3H72)

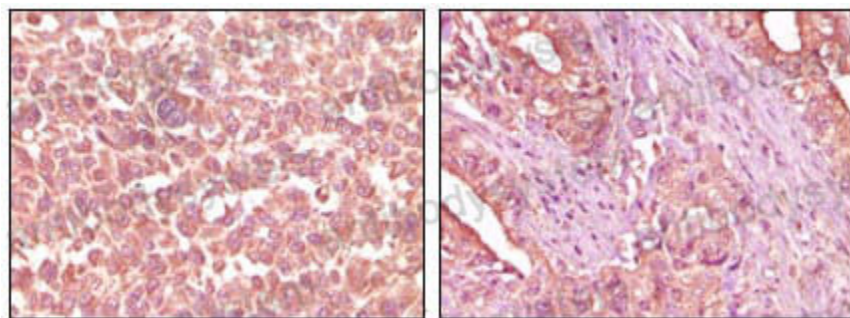
Summary

Catalog No.	RHD82401
Clone ID	R3H72
Host species	Mouse
Tested applications	IHC: 1:200-1:1000, WB: 1:500-1:2000
Species reactivity	Human
Form	Liquid
Storage buffer	0.01M PBS, pH 7.4, 0.05% Sodium Azide.
Concentration	1 mg/ml
Purity	>95% as determined by SDS-PAGE.
Clonality	Monoclonal
Isotype	IgM
Applications	IHC, WB
Target	Epithelial cell kinase, Tyrosine-protein kinase receptor ECK, EPHA2, Ephrin type-A receptor 2, ECK
Purification	Protein A/G purified from cell culture supernatant.
Endotoxin level	Please contact with the lab for this information.
Accession	P29317
Stability and Storage	Use a manual defrost freezer and avoid repeated freeze-thaw cycles. Store at 4°C short term (1-2 weeks). Store at -20°C 12 months. Store at -80°C long term.

Note

For research use only.

Data Image



Immunohistochemical analysis of paraffin-embedded human skin carcinoma (left) and pancreas carcinoma (right) tissue, showing cytoplasmic localization using EphA2 mouse mAb with DAB staining.

Immunohistochemical



Western blot analysis using EphA2 mouse mAb against NIH/3T3 cell lysate.

Western blot