

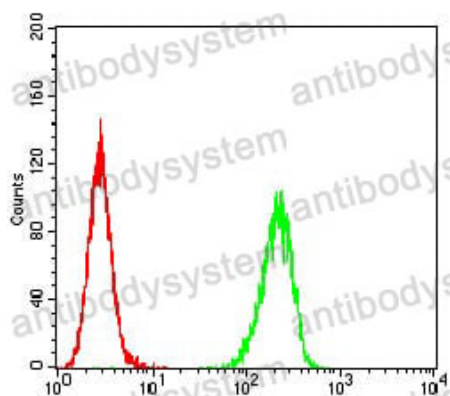
# Anti-A2AR/ADORA2A Antibody (R3H71)

## Summary

---

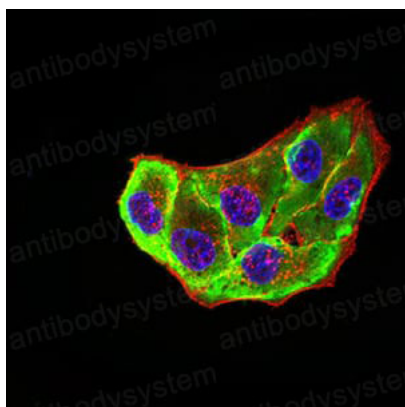
<b>Catalog No.</b>	RHD82102
<b>Clone ID</b>	R3H71
<b>Host species</b>	Mouse
<b>Tested applications</b>	ELISA: 1:10000, FCM: 1:200-1:400, IF: 1:100-1:500, WB: 1:500-1:1000
<b>Species reactivity</b>	Human, Mouse, Rat, Monkey
<b>Form</b>	Liquid
<b>Storage buffer</b>	0.01M PBS, pH 7.4, 0.05% Sodium Azide.
<b>Concentration</b>	1 mg/ml
<b>Purity</b>	>95% as determined by SDS-PAGE.
<b>Clonality</b>	Monoclonal
<b>Isotype</b>	IgG2a
<b>Applications</b>	ELISA, FCM, IF, WB
<b>Target</b>	Adenosine receptor A2a, ADORA2A, ADORA2
<b>Purification</b>	Protein A/G purified from cell culture supernatant.
<b>Endotoxin level</b>	Please contact with the lab for this information.
<b>Accession</b>	P29274
<b>Stability and Storage</b>	Use a manual defrost freezer and avoid repeated freeze-thaw cycles. Store at 4°C short term (1-2 weeks). Store at -20°C 12 months. Store at -80°C long term.
<b>Note</b>	For research use only.

## Data Image



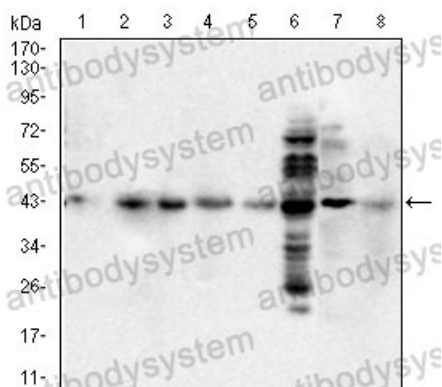
Flow Cytometry

Flow cytometric analysis of Hela cells using ADORA2A mouse mAb (green) and negative control (red).



Immunofluorescence

Immunofluorescence analysis of Hela cells using ADORA2A mouse mAb (green). Blue: DRAQ5 fluorescent DNA dye. Red: Actin filaments have been labeled with Alexa Fluor-555 phalloidin.



Western blot

Western blot analysis using ADORA2A mouse mAb against CHO3D10(1), COS7(2), F9(3), L1210(4), C6(5), C2C12(6), NIH/3T3(7), Raw264.7(8) cell lysate.