

# Anti-CD30/TNFRSF8 Antibody (R3H62)

## Summary

---

<b>Catalog No.</b>	RHD80902
<b>Clone ID</b>	R3H62
<b>Host species</b>	Mouse
<b>Tested applications</b>	ELISA: 1:10000, FCM: 1:200-1:400, WB: 1:500-1:2000
<b>Species reactivity</b>	Human
<b>Form</b>	Liquid
<b>Storage buffer</b>	0.01M PBS, pH 7.4, 0.05% Sodium Azide.
<b>Concentration</b>	1 mg/ml
<b>Purity</b>	>95% as determined by SDS-PAGE.
<b>Clonality</b>	Monoclonal
<b>Isotype</b>	IgG1
<b>Applications</b>	ELISA, FCM, WB
<b>Target</b>	CD30L receptor, Ki-1 antigen, CD30, TNFRSF8, D1S166E, Tumor necrosis factor receptor superfamily member 8, Lymphocyte activation antigen CD30
<b>Purification</b>	Protein A/G purified from cell culture supernatant.
<b>Endotoxin level</b>	Please contact with the lab for this information.
<b>Accession</b>	P28908

**Stability and Storage**

Use a manual defrost freezer and avoid repeated freeze-thaw cycles.

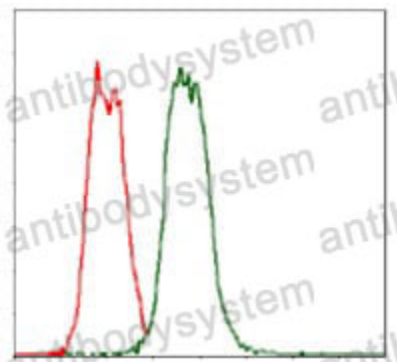
Store at 4°C short term (1-2 weeks). Store at -20°C 12 months. Store at -80°C long term.

**Note**

For research use only.

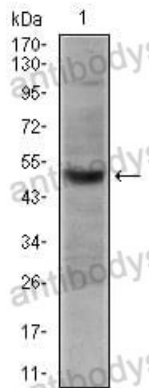
**Data Image**

---



Flow Cytometry

Flow cytometric analysis of Hela cells using CD30 mouse mAb (green) and negative control (red).



Western blot

Western blot analysis using CD30 mouse mAb against Hela cell lysate.