

Anti-CD38/ADPRC 1 Antibody (R3H61)

Summary

Catalog No.	RHD80809
Clone ID	R3H61
Host species	Mouse
Tested applications	IHC: 1:100-1:200
Species reactivity	Human
Form	Liquid
Storage buffer	0.01M PBS, pH 7.4, 0.05% Sodium Azide.
Concentration	1 mg/ml
Purity	>95% as determined by SDS-PAGE.
Clonality	Monoclonal
Isotype	IgG1
Applications	IHC
Target	Cyclic ADP-ribose hydrolase 1, ADP-ribosyl cyclase/cyclic ADP-ribose hydrolase 1, cADPr hydrolase 1, 2'-phospho-ADP-ribosyl cyclase/2'-phospho-cyclic-ADP-ribose transferase, T10, 2'-phospho-cyclic-ADP-ribose transferase, CD38, ADPRC 1, ADP-ribosyl cyclase 1, 2'-phospho-ADP-ribosyl cyclase
Purification	Protein A/G purified from cell culture supernatant.
Endotoxin level	Please contact with the lab for this information.
Accession	P28907

Stability and Storage

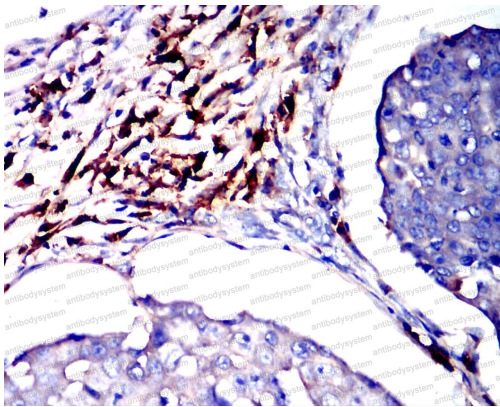
Use a manual defrost freezer and avoid repeated freeze-thaw cycles.

Store at 4°C short term (1-2 weeks). Store at -20°C 12 months. Store at -80°C long term.

Note

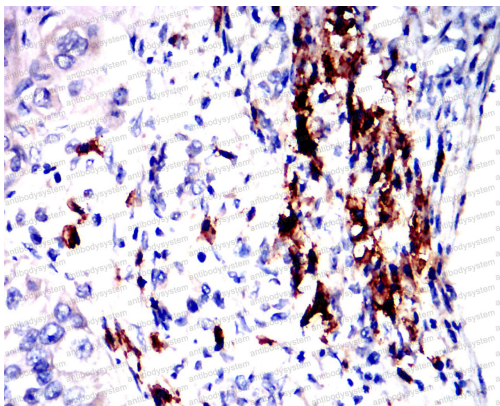
For research use only.

Data Image



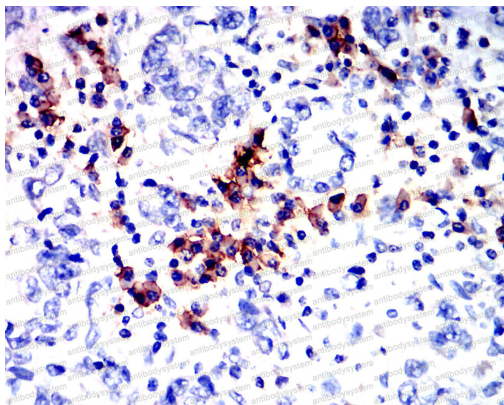
Immunohistochemical

Immunohistochemical analysis of paraffin-embedded human breast cancer tissues using CD38 mouse mAb with DAB staining.



Immunohistochemical

Immunohistochemical analysis of paraffin-embedded human renal cancer tissues using CD38 mouse mAb with DAB staining.



Immunohistochemical

Immunohistochemical analysis of paraffin-embedded human gastric cancer tissues using CD38 mouse mAb with DAB staining.