

Anti-SMARCA1 Antibody (R3H53)

Summary

Catalog No.	RHD79201
Clone ID	R3H53
Host species	Mouse
Tested applications	ELISA: 1:10000, FCM: 1:200-1:400, IHC: 1:200-1:1000, WB: 1:500-1:2000
Species reactivity	Human, Mouse
Form	Liquid
Storage buffer	0.01M PBS, pH 7.4, 0.05% Sodium Azide.
Concentration	1 mg/ml
Purity	>95% as determined by SDS-PAGE.
Clonality	Monoclonal
Isotype	IgG1
Applications	ELISA, FCM, IHC, WB
Target	SWI/SNF-related matrix-associated actin-dependent regulator of chromatin subfamily A member 1, ATP-dependent helicase SMARCA1, SMARCA1, SNF2L, Probable global transcription activator SNF2L1, Nucleosome-remodeling factor subunit SNF2L, SNF2L1
Purification	Protein A/G purified from cell culture supernatant.
Endotoxin level	Please contact with the lab for this information.
Accession	P28370

Stability and Storage

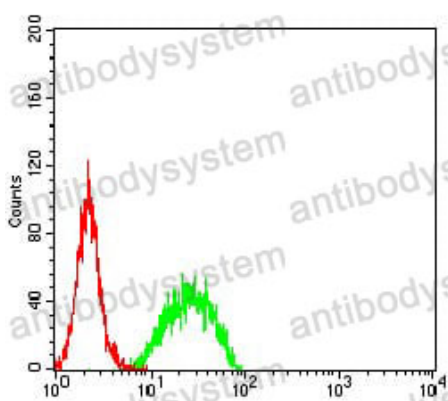
Use a manual defrost freezer and avoid repeated freeze-thaw cycles.

Store at 4°C short term (1-2 weeks). Store at -20°C 12 months. Store at -80°C long term.

Note

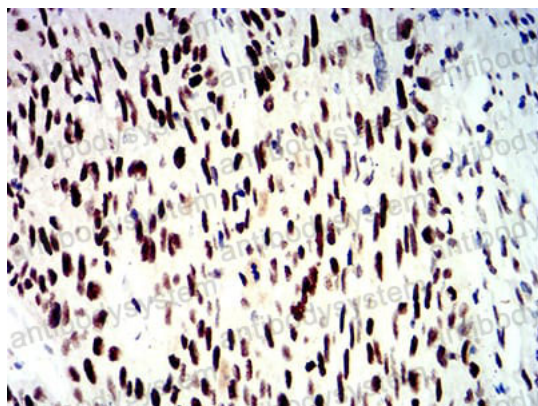
For research use only.

Data Image



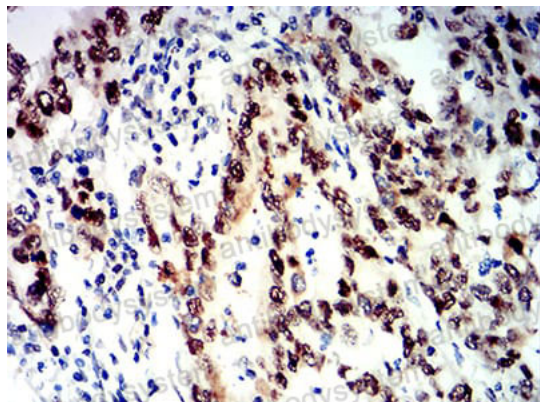
Flow Cytometry

Flow cytometric analysis of NIH/3T3 cells using SMARCA1 mouse mAb (green) and negative control (red).



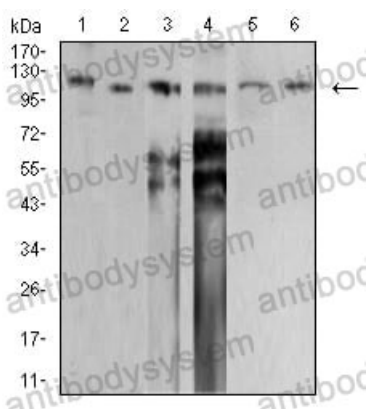
Immunohistochemical

Immunohistochemical analysis of paraffin-embedded human esophageal cancer tissues using SMARCA1 mouse mAb with DAB staining.



Immunohistochemical

Immunohistochemical analysis of paraffin-embedded human stomach cancer tissues using SMARCA1 mouse mAb with DAB staining.



Western blot

Western blot analysis using SMARCA1 mouse mAb against PANC-1 (1), HEK293 (2), SW620 (3), HT-29 (4), SH-SY5Y (5), and SK-OV-3 (6) cell lysate.