

Anti-PSMB8 Antibody (R3H50)

Summary

Catalog No.	RHD76102
Clone ID	R3H50
Host species	Mouse
Tested applications	ELISA: 1:10000, IF: 1:200-1:1000, IHC: 1:200-1:1000, WB: 1:500-1:2000
Species reactivity	Human, Rat
Form	Liquid
Storage buffer	0.01M PBS, pH 7.4, 0.05% Sodium Azide.
Concentration	1 mg/ml
Purity	>95% as determined by SDS-PAGE.
Clonality	Monoclonal
Isotype	IgG1
Applications	ELISA, IF, IHC, WB
Target	Low molecular mass protein 7, Macropain subunit C13, Really interesting new gene 10 protein, RING10, LMP7, Y2, Proteasome component C13, PSMB5i, Multicatalytic endopeptidase complex subunit C13, Proteasome subunit beta-5i, Proteasome subunit beta type-8, PSMB8
Purification	Protein A/G purified from cell culture supernatant.
Endotoxin level	Please contact with the lab for this information.
Accession	P28062

Stability and Storage

Use a manual defrost freezer and avoid repeated freeze-thaw cycles.

Store at 4°C short term (1-2 weeks). Store at -20°C 12 months. Store at -80°C long term.

Note

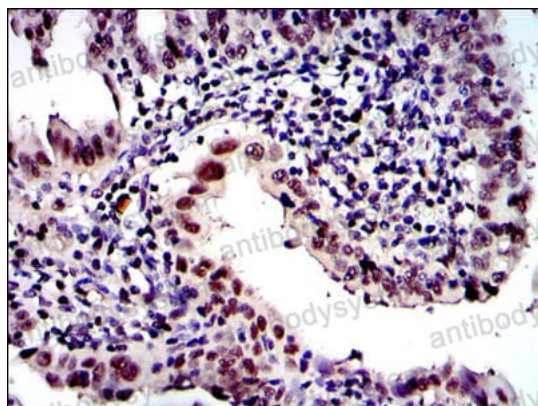
For research use only.

Data Image



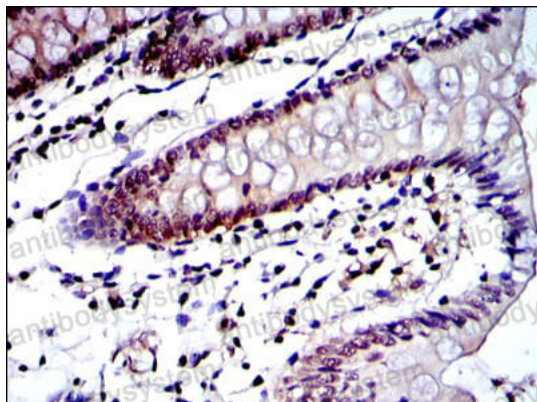
Immunofluorescence

Immunofluorescence analysis of Hela cells using PSMB8 mouse mAb (green). Blue: DRAQ5 fluorescent DNA dye. Red: Actin filaments have been labeled with Alexa Fluor-555 phalloidin.



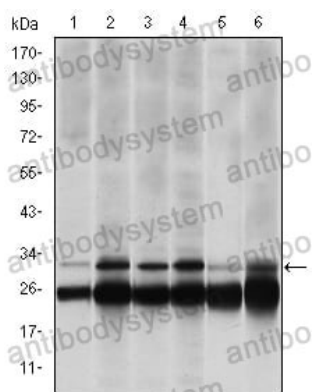
Immunohistochemical

Immunohistochemical analysis of paraffin-embedded human intima cancer tissues using PSMB8 mouse mAb with DAB staining.



Immunohistochemical

Immunohistochemical analysis of paraffin-embedded human colon tissues using PSMB8 mouse mAb with DAB staining.



Western blot

Western blot analysis using PSMB8 mouse mAb against HeLa (1), MCF-7 (2), A431 (3), RAJI (4), MOTL4 (5) and PC-12 (6) cell lysate.