

Anti-Calreticulin/CALR Antibody (R3H41)

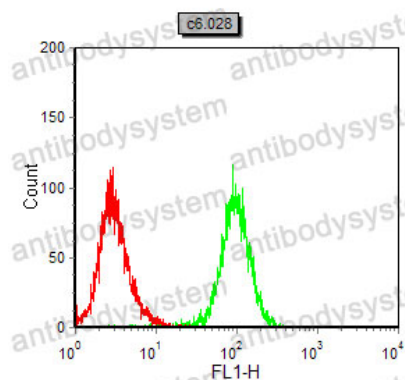
Summary

Catalog No.	RHD75202
Clone ID	R3H41
Host species	Mouse
Tested applications	FCM: 1:200-1:400, IF: 1:50-1:500, IHC: 1:100-1:500, WB: 1:500-1:2000
Species reactivity	Human, Mouse, Rat, Rabbit
Form	Liquid
Storage buffer	0.01M PBS, pH 7.4, 0.05% Sodium Azide.
Concentration	1 mg/ml
Purity	>95% as determined by SDS-PAGE.
Clonality	Monoclonal
Isotype	IgG2a
Applications	FCM, IF, IHC, WB
Target	Calreticulin, ERp60, CRTC, Calregulin, grp60, HACBP, Endoplasmic reticulum resident protein 60, CALR, CRP55
Purification	Protein A/G purified from cell culture supernatant.
Endotoxin level	Please contact with the lab for this information.
Accession	P27797
Stability and Storage	Use a manual defrost freezer and avoid repeated freeze-thaw cycles. Store at 4°C short term (1-2 weeks). Store at -20°C 12 months. Store at -80°C long term.

Note

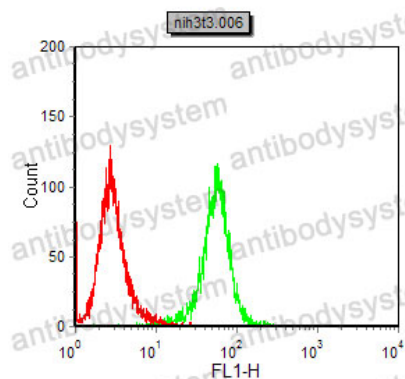
For research use only.

Data Image



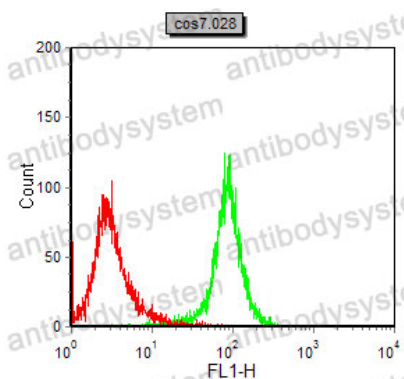
Flow Cytometry

Flow cytometric analysis of C6 cells using Calreticulin mouse mAb (green) and negative control (red).



Flow Cytometry

Flow cytometric analysis of NIH/3T3 cells using Calreticulin mouse mAb (green) and negative control (red).



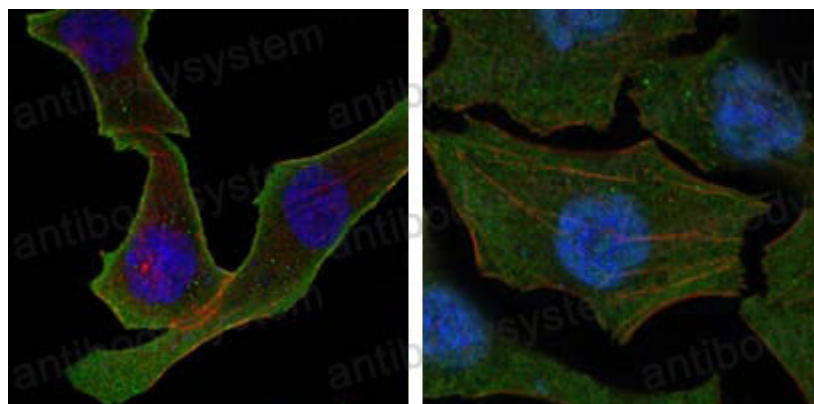
Flow Cytometry

Flow cytometric analysis of COS7 cells using Calreticulin mouse mAb (green) and negative control (red).



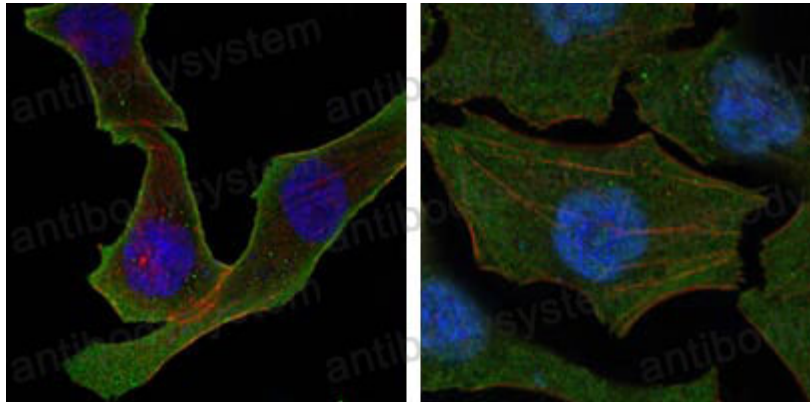
Immunofluorescence

Confocal Immunofluorescence analysis of 3T3-L1 cells using Calreticulin mouse mAb (green). Blue: DRAQ5 fluorescent DNA dye.



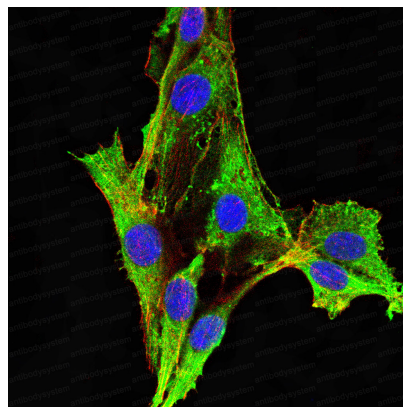
Immunofluorescence

Confocal Immunofluorescence analysis of SKBR-3 (left) and A549 (right) cells using Calreticulin mouse mAb (green). Red: Actin filaments have been labeled with DY-554 phalloidin. Blue: DRAQ5 fluorescent DNA dye.



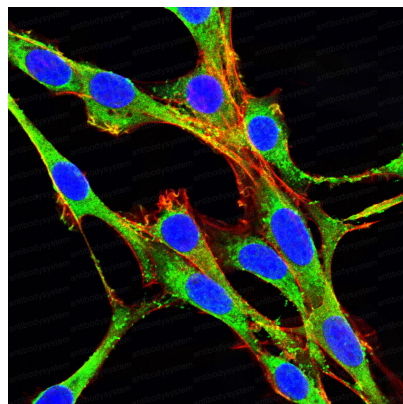
Immunofluorescence

Confocal Immunofluorescence analysis of SKBR-3 (left) and A549 (right) cells using Calreticulin mouse mAb (green). Red: Actin filaments have been labeled with DY-554 phalloidin. Blue: DRAQ5 fluorescent DNA dye.



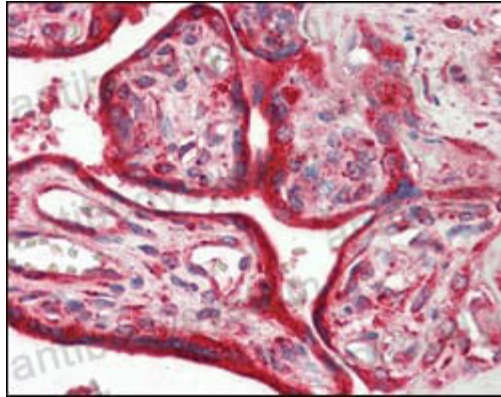
Immunofluorescence

Immunofluorescence analysis of COS7 cells using Calreticulin mouse mAb (green). Blue: DRAQ5 fluorescent DNA dye. Red: Actin filaments have been labeled with Alexa Fluor- 555 phalloidin.



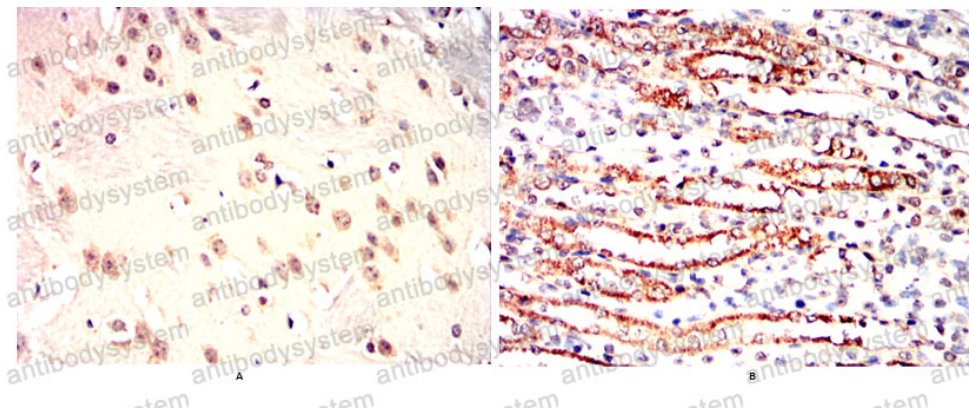
Immunofluorescence

Immunofluorescence analysis of NIH/3T3 cells using Calreticulin mouse mAb (green). Blue: DRAQ5 fluorescent DNA dye. Red: Actin filaments have been labeled with Alexa Fluor- 555 phalloidin.



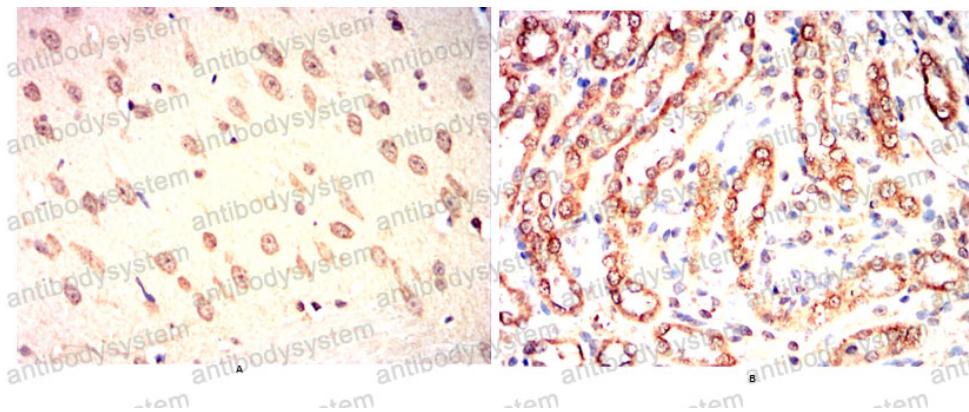
Immunohistochemical

Immunohistochemical analysis of paraffin-embedded human placenta tissues using Calreticulin mouse mAb.



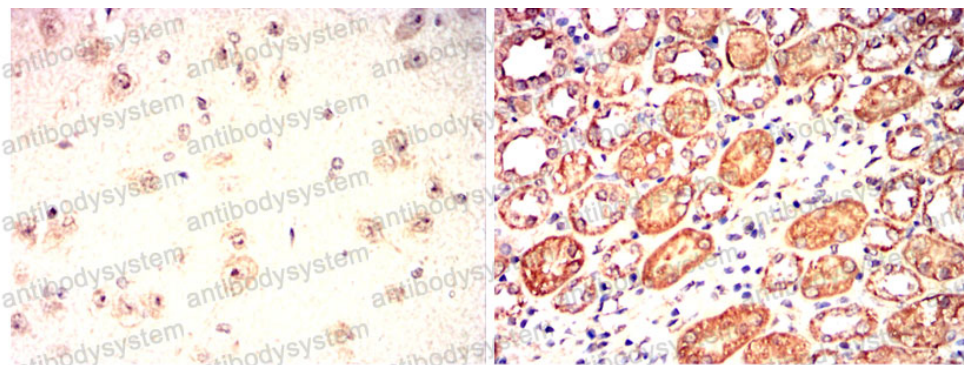
Immunohistochemical

Immunohistochemical analysis of paraffin-embedded Mouse brain(A) Mouse kidney(B) using Calreticulin mouse mAb with DAB staining.



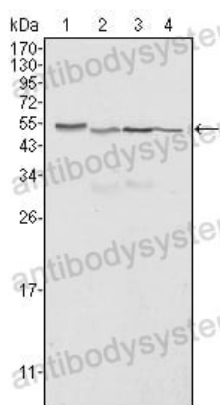
Immunohistochemical

Immunohistochemical analysis of paraffin-embedded Rat brain(A) Rat kidney(B) using Calreticulin mouse mAb with DAB staining.



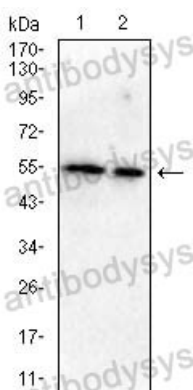
Immunohistochemical analysis of paraffin-embedded Rabbit brain(A) Rabbit kidney(B) using Calreticulin mouse mAb with DAB staining.

Immunohistochemical



Western blot analysis using Calreticulin mouse mAb against Hela (1), A549 (2), NTERA2 (3) and MCF-7 (4) cell lysate.

Western blot



Western blot analysis using Calreticulin mouse mAb against Hela(1) MCF-7(2) cell lysate.

Western blot