

Anti-APEX1 Antibody (R3H38)

Summary

Catalog No.	RHD74802
Clone ID	R3H38
Host species	Mouse
Tested applications	ELISA: 1:10000, FCM: 1:200-1:400, IHC: 1:200-1:1000, WB: 1:500-1:2000
Species reactivity	Human, Rat, Monkey
Form	Liquid
Storage buffer	0.01M PBS, pH 7.4, 0.05% Sodium Azide.
Concentration	1 mg/ml
Purity	>95% as determined by SDS-PAGE.
Clonality	Monoclonal
Isotype	IgG1
Applications	ELISA, FCM, IHC, WB
Target	APX, APE1, APEX nuclease, APEN, Redox factor-1, APE-1, REF1, APEX, APE, Apurinic-apyrimidinic endonuclease 1, HAP1, AP endonuclease 1, APEX1, DNA-(apurinic or apyrimidinic site) endonuclease, REF-1
Purification	Protein A/G purified from cell culture supernatant.
Endotoxin level	Please contact with the lab for this information.
Accession	P27695

Stability and Storage

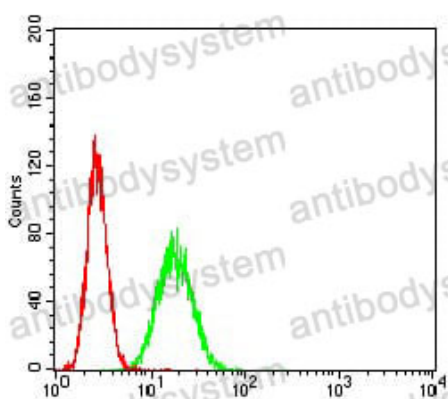
Use a manual defrost freezer and avoid repeated freeze-thaw cycles.

Store at 4°C short term (1-2 weeks). Store at -20°C 12 months. Store at -80°C long term.

Note

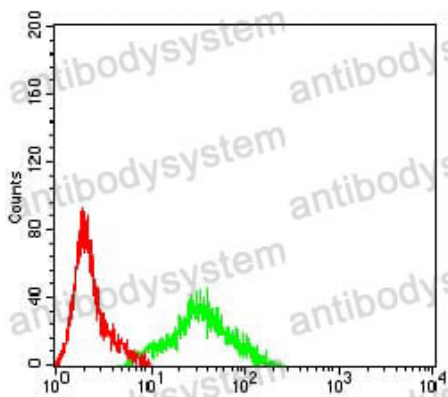
For research use only.

Data Image



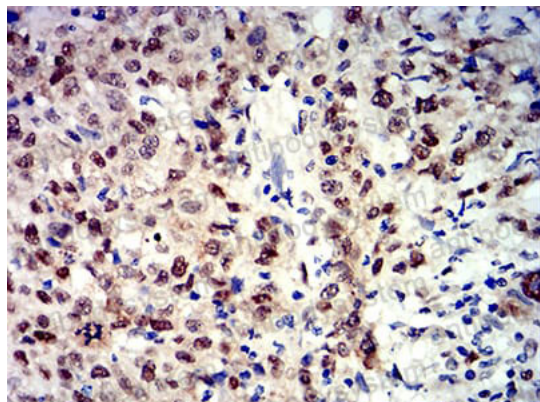
Flow Cytometry

Flow cytometric analysis of HeLa cells using APEX1 mouse mAb (green) and negative control (red).



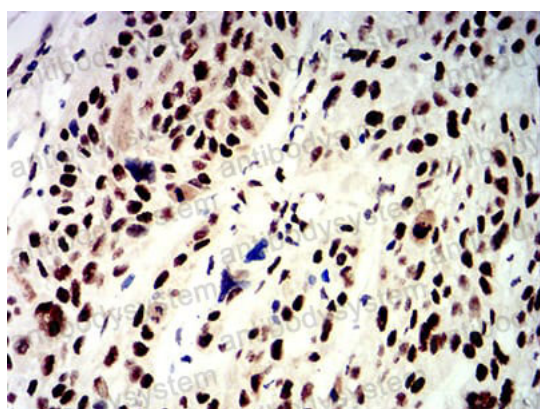
Flow Cytometry

Flow cytometric analysis of SK-N-SH cells using APEX1 mouse mAb (green) and negative control (red).



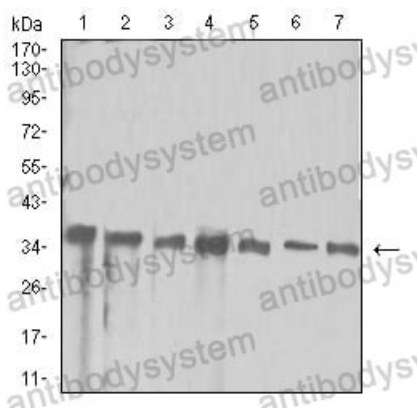
Immunohistochemical

Immunohistochemical analysis of paraffin-embedded human breast cancer tissues using APEX1 mouse mAb with DAB staining.



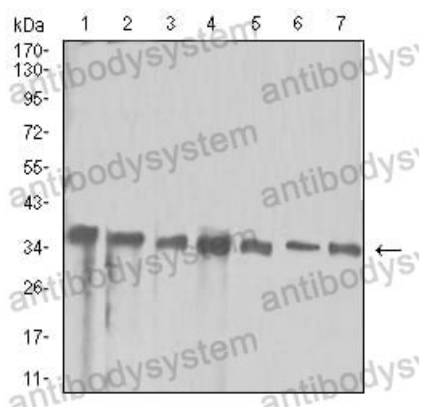
Immunohistochemical

Immunohistochemical analysis of paraffin-embedded human esophageal cancer tissues using APEX1 mouse mAb with DAB staining.



Western blot

Western blot analysis using APEX1 mouse mAb against Hela (1), Jurkat (2), SW480 (3), A431 (4), HepG2 (5), NIH/3T3 (6), and PC-12 (7) cell lysate.



Western blot

Western blot analysis using APEX1 mouse mAb against Hela (1), Jurkat (2), SW480 (3), A431 (4), HepG2 (5), NIH/3T3 (6), and PC-12 (7) cell lysate.