

# Anti-RPA1 Antibody (R3H37)

## Summary

---

<b>Catalog No.</b>	RHD74703
<b>Clone ID</b>	R3H37
<b>Host species</b>	Mouse
<b>Tested applications</b>	IF: 1:50-1:200, IP: 1:20, WB: 1:500-1:1000
<b>Species reactivity</b>	Human, Mouse, Rat, Monkey
<b>Form</b>	Liquid
<b>Storage buffer</b>	0.01M PBS, pH 7.4, 0.5% BSA, 0.05% Sodium Azide and 50% Glycerol.
<b>Concentration</b>	1 mg/ml
<b>Purity</b>	>95% as determined by SDS-PAGE.
<b>Clonality</b>	Monoclonal
<b>Isotype</b>	IgG2a
<b>Applications</b>	IF, IP, WB
<b>Target</b>	RF-A protein 1, Replication protein A 70 kDa DNA-binding subunit, REPA1, RP-A p70, Single-stranded DNA-binding protein, RPA70, RPA1, Replication factor A protein 1
<b>Purification</b>	Protein A/G purified from cell culture supernatant.
<b>Endotoxin level</b>	Please contact with the lab for this information.
<b>Accession</b>	P27694

**Stability and Storage**

Use a manual defrost freezer and avoid repeated freeze-thaw cycles.

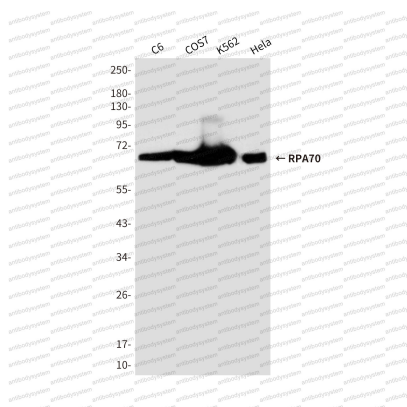
Store at 4°C short term (1-2 weeks). Store at -20°C 12 months. Store at -80°C long term.

**Note**

For research use only.

**Data Image**

---



Western blot

Western blot analysis of RPA70 in C6, COS7, K562 and HeLa lysates using RPA70 antibody.