

Anti-RPA1 Antibody (R3H36)

Summary

Catalog No.	RHD74702
Clone ID	R3H36
Host species	Mouse
Tested applications	ELISA: 1:10000, FCM: 1:200-1:400, IF: 1:200-1:1000, IHC: 1:200-1:1000, WB: 1:500-1:2000
Species reactivity	Human, Monkey
Form	Liquid
Storage buffer	0.01M PBS, pH 7.4, 0.05% Sodium Azide.
Concentration	1 mg/ml
Purity	>95% as determined by SDS-PAGE.
Clonality	Monoclonal
Isotype	IgG1
Applications	ELISA, FCM, IF, IHC, WB
Target	RF-A protein 1, Replication protein A 70 kDa DNA-binding subunit, REPA1, RP-A p70, Single-stranded DNA-binding protein, RPA70, RPA1, Replication factor A protein 1
Purification	Protein A/G purified from cell culture supernatant.
Endotoxin level	Please contact with the lab for this information.
Accession	P27694

Stability and Storage

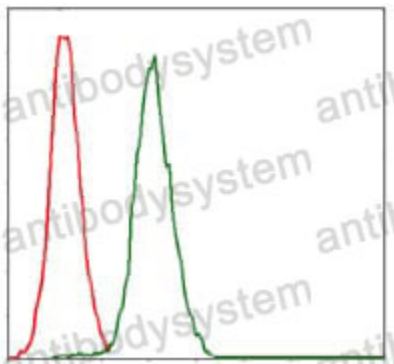
Use a manual defrost freezer and avoid repeated freeze-thaw cycles.

Store at 4°C short term (1-2 weeks). Store at -20°C 12 months. Store at -80°C long term.

Note

For research use only.

Data Image



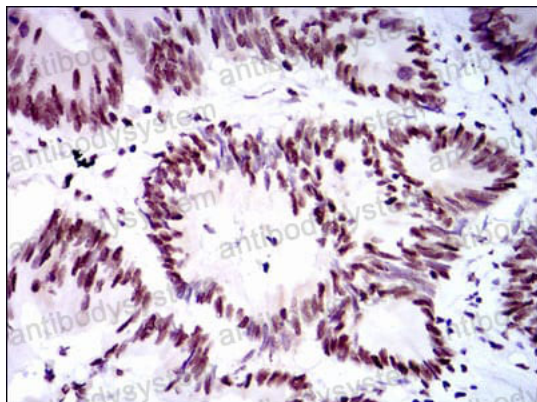
Flow Cytometry

Flow cytometric analysis of Jurkat cells using RPA1 mouse mAb (green) and negative control (red).



Immunofluorescence

Immunofluorescence analysis of HeLa cells using RPA1 mouse mAb (green). Red: Actin filaments have been labeled with Alexa Fluor-555 phalloidin.



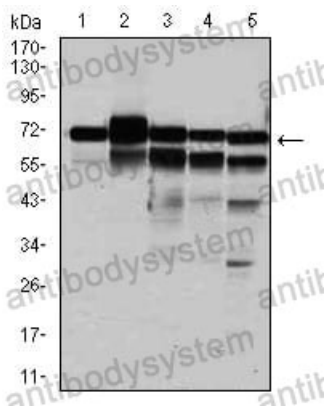
Immunohistochemical

Immunohistochemical analysis of paraffin-embedded human colon cancer tissues using RPA1 mouse mAb with DAB staining.



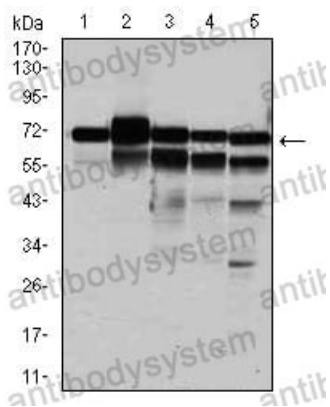
Immunohistochemical

Immunohistochemical analysis of paraffin-embedded human prostate tissues using RPA1 mouse mAb with DAB staining.



Western blot

Western blot analysis using RPA1 mouse mAb against HeLa (1), MCF-7 (2), K562(3), A431(4), and COS-7 (6) cell lysate.



Western blot

Western blot analysis using RPA1 mouse mAb against HeLa (1), MCF-7 (2), K562(3), A431(4), and COS-7 (5) cell lysate.