

Anti-ERK1/2 Antibody (R3H31)

Summary

Catalog No.	RHD73616
Clone ID	R3H31
Host species	Mouse
Tested applications	IHC: 1:50-1:100, WB: 1:500-1:1000
Species reactivity	Human, Mouse, Rat
Form	Liquid
Storage buffer	0.01M PBS, pH 7.4, 0.5% BSA, 0.05% Sodium Azide and 50% Glycerol.
Concentration	1 mg/ml
Purity	>95% as determined by SDS-PAGE.
Clonality	Monoclonal
Isotype	IgG1
Applications	IHC, WB
Target	Microtubule-associated protein 2 kinase, p44-MAPK, Extracellular signal-regulated kinase 1, ERK1, MAPK3, MAP kinase isoform p44, Mitogen-activated protein kinase 3, ERK-1, PRKM3, Insulin-stimulated MAP2 kinase, p44-ERK1, MAPK 3, MAP kinase 3, ERT2, MAP kinase isoform p42, PRKM2, Extracellular signal-regulated kinase 2, MAPK 2, Mitogen-activated protein kinase 1, PRKM1, p42-MAPK, Mitogen-activated protein kinase 2, MAP kinase 1, MAP kinase 2, ERK2, ERT1, ERK-2, MAPK 1, MAPK1
Purification	Protein A/G purified from cell culture supernatant.
Endotoxin level	Please contact with the lab for this information.

Accession P27361, P28482

Stability and Storage

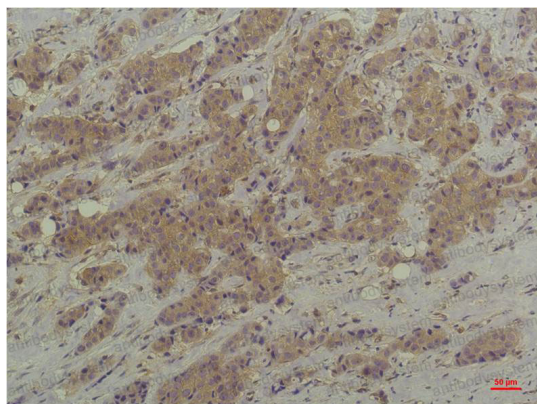
Use a manual defrost freezer and avoid repeated freeze-thaw cycles.

Store at 4°C short term (1-2 weeks). Store at -20°C 12 months. Store at -80°C long term.

Note

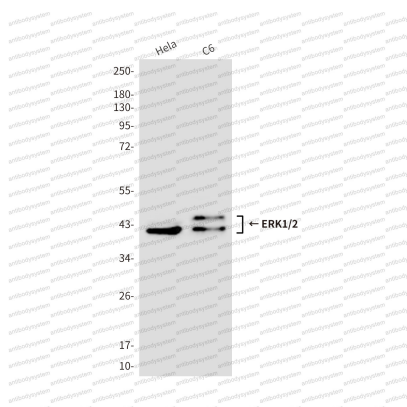
For research use only.

Data Image



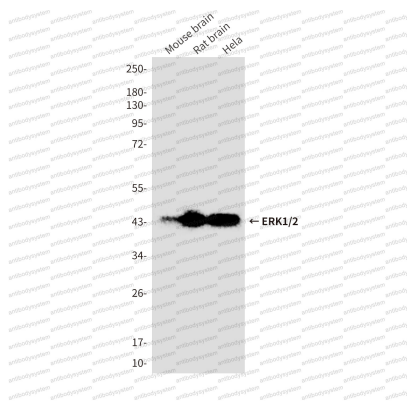
Immunohistochemical

Immunohistochemistry analysis of paraffin-embedded Human Breast Carcinoma using ERK1/2 antibody. High-pressure and temperature Sodium Citrate pH 6.0 was used for antigen retrieval.



Western blot

Western blot analysis of ERK1/2 in HeLa, C6 lysates using ERK1/2 antibody



Western blot

Western blot analysis of ERK1/2 in mouse brain, rat brain , Hela lysates using ERK1/2 antibody