

# Anti-Phospho-ERK1/2 (Tyr222/Tyr205) Antibody (R3H26)

## Summary

---

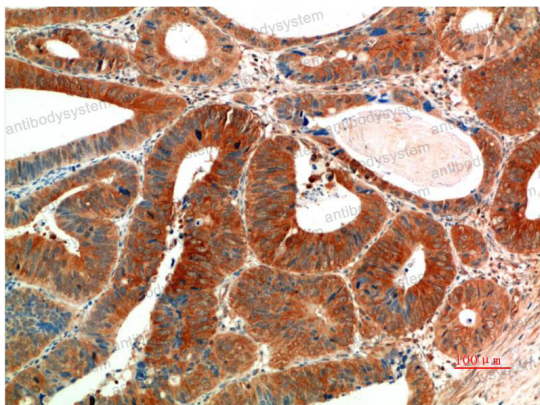
<b>Catalog No.</b>	RHD73611
<b>Clone ID</b>	R3H26
<b>Host species</b>	Mouse
<b>Tested applications</b>	IHC: 1:50-1:100
<b>Species reactivity</b>	Human, Mouse, Rat
<b>Form</b>	Liquid
<b>Storage buffer</b>	0.01M PBS, pH 7.4, 0.5% BSA, 0.05% Sodium Azide and 50% Glycerol.
<b>Concentration</b>	1 mg/ml
<b>Purity</b>	>95% as determined by SDS-PAGE.
<b>Clonality</b>	Monoclonal
<b>Isotype</b>	IgG1
<b>Applications</b>	IHC
<b>Target</b>	Microtubule-associated protein 2 kinase, p44-MAPK, Extracellular signal-regulated kinase 1, ERK1, MAPK3, MAP kinase isoform p44, Mitogen-activated protein kinase 3, ERK-1, PRKM3, Insulin-stimulated MAP2 kinase, p44-ERK1, MAPK 3, MAP kinase 3, ERT2, MAP kinase isoform p42, PRKM2, Extracellular signal-regulated kinase 2, MAPK 2, Mitogen-activated protein kinase 1, PRKM1, p42-MAPK, Mitogen-activated protein kinase 2, MAP kinase 1, MAP kinase 2, ERK2, ERT1, ERK-2, MAPK 1, MAPK1, Phospho-ERK1 (Tyr222/Tyr205), Phospho-ERK2 (Tyr222/Tyr205)

## Recombinant Proteins &amp; Antibodies

<b>Purification</b>	Protein A/G purified from cell culture supernatant.
<b>Endotoxin level</b>	Please contact with the lab for this information.
<b>Accession</b>	P27361, P28482
<b>Stability and Storage</b>	Use a manual defrost freezer and avoid repeated freeze-thaw cycles. Store at 4°C short term (1-2 weeks). Store at -20°C 12 months. Store at -80°C long term.
<b>Note</b>	For research use only.

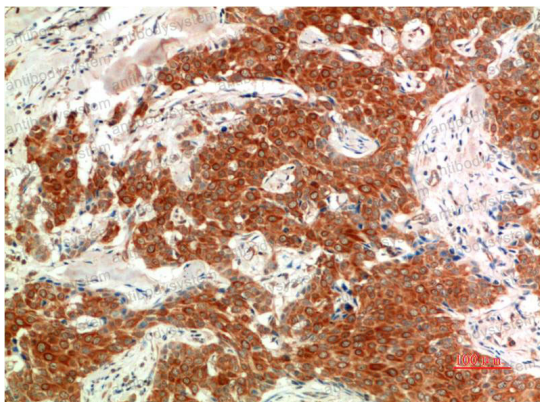
## Data Image

---



Immunohistochemical

Immunohistochemistry analysis of paraffin-embedded Human Colon Carcinoma Tissue using Phospho-ERK1/2 (Tyr222/Tyr205) antibody. High-pressure and temperature Sodium Citrate pH 6.0 was used for antigen retrieval.



Immunohistochemical

Immunohistochemical analysis of paraffin-embedded Human tonsils using Phospho-ERK1/2 (Tyr222/Tyr205) antibody. High-pressure and temperature Sodium Citrate pH 6.0 was used for antigen retrieval.