

Anti-MAPK3 Antibody (R3H24)

Summary

Catalog No.	RHD73609
Clone ID	R3H24
Host species	Mouse
Tested applications	ELISA: 1:10000, FCM: 1:200-1:400, IF: 1:200-1:1000, IHC: 1:200-1:1000, WB: 1:500-1:2000
Species reactivity	Human, Mouse, Rat, Monkey
Form	Liquid
Storage buffer	0.01M PBS, pH 7.4, 0.05% Sodium Azide.
Concentration	1 mg/ml
Purity	>95% as determined by SDS-PAGE.
Clonality	Monoclonal
Isotype	IgG1
Applications	ELISA, FCM, IF, IHC, WB
Target	Microtubule-associated protein 2 kinase, p44-MAPK, Extracellular signal-regulated kinase 1, ERK1, MAPK3, MAP kinase isoform p44, Mitogen-activated protein kinase 3, ERK-1, PRKM3, Insulin-stimulated MAP2 kinase, p44-ERK1, MAPK 3, MAP kinase 3, ERT2
Purification	Protein A/G purified from cell culture supernatant.
Endotoxin level	Please contact with the lab for this information.
Accession	P27361

Stability and Storage

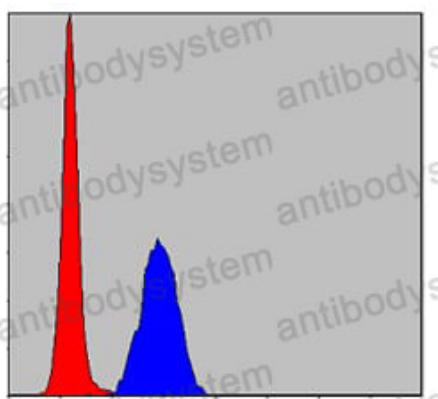
Use a manual defrost freezer and avoid repeated freeze-thaw cycles.

Store at 4°C short term (1-2 weeks). Store at -20°C 12 months. Store at -80°C long term.

Note

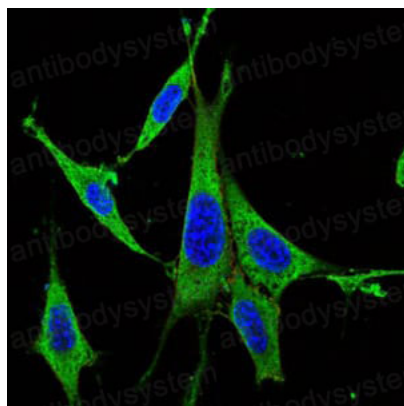
For research use only.

Data Image



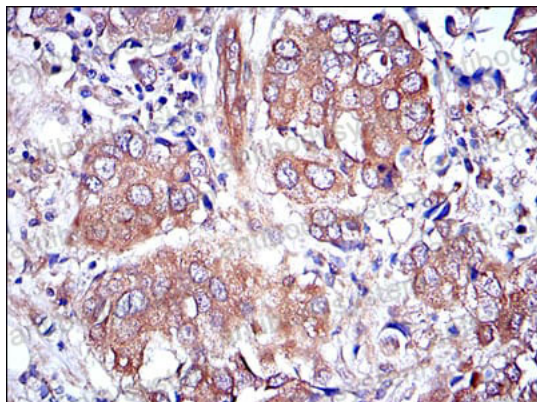
Flow Cytometry

Flow cytometric analysis of Hela cells using MAPK3 mouse mAb (blue) and negative control (red).



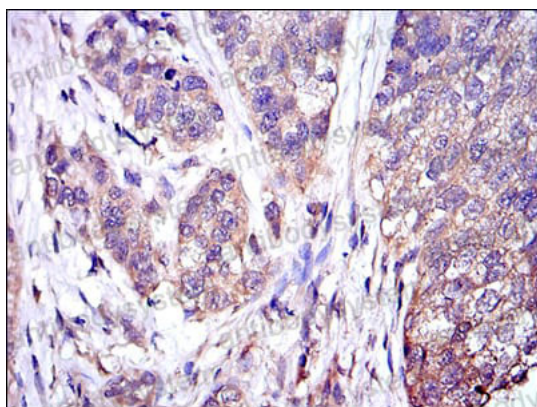
Immunofluorescence

Immunofluorescence analysis of NIH/3T3 cells using MAPK3 mouse mAb (green). Blue: DRAQ5 fluorescent DNA dye. Red: Actin filaments have been labeled with Alexa Fluor-555 phalloidin.



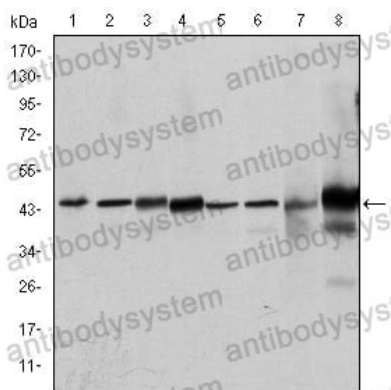
Immunohistochemical

Immunohistochemical analysis of paraffin-embedded human breast cancer tissues using MAPK3 mouse mAb with DAB staining.



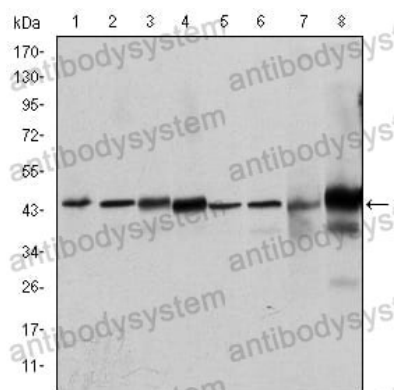
Immunohistochemical

Immunohistochemical analysis of paraffin-embedded human bladder cancer tissues using MAPK3 mouse mAb with DAB staining.



Western blot

Western blot analysis using MAPK3 mouse mAb against Hela (1), Jurkat (2), RAW264.7 (3), HEK293 (4), K562 (5), NIH/3T3 (6), Cos7 (7) and PC-12 (8) cell lysate.



Western blot

Western blot analysis using MAPK3 mouse mAb against Hela (1), Jurkat (2), RAW264.7 (3), HEK293 (4), K562 (5), NIH/3T3 (6), Cos7 (7) and PC-12 (8) cell lysate.