

# Anti-CD314/KLRK1/NKG2D Antibody (R3H16)

## Summary

---

<b>Catalog No.</b>	RHD72102
<b>Clone ID</b>	R3H16
<b>Host species</b>	Mouse
<b>Tested applications</b>	ELISA: 1:10000, FCM: 1:200-1:400, WB: 1:500-1:2000
<b>Species reactivity</b>	Human, Rat
<b>Form</b>	Liquid
<b>Storage buffer</b>	0.01M PBS, pH 7.4, 0.05% Sodium Azide.
<b>Concentration</b>	1 mg/ml
<b>Purity</b>	>95% as determined by SDS-PAGE.
<b>Clonality</b>	Monoclonal
<b>Isotype</b>	IgG2a
<b>Applications</b>	ELISA, FCM, WB
<b>Target</b>	KLRK1, NKG2D, Killer cell lectin-like receptor subfamily K member 1, NKG2-D-activating NK receptor, D12S2489E, NKG2-D type II integral membrane protein, NK cell receptor D, CD314
<b>Purification</b>	Protein A/G purified from cell culture supernatant.
<b>Endotoxin level</b>	Please contact with the lab for this information.
<b>Accession</b>	P26718

**Stability and Storage**

Use a manual defrost freezer and avoid repeated freeze-thaw cycles.

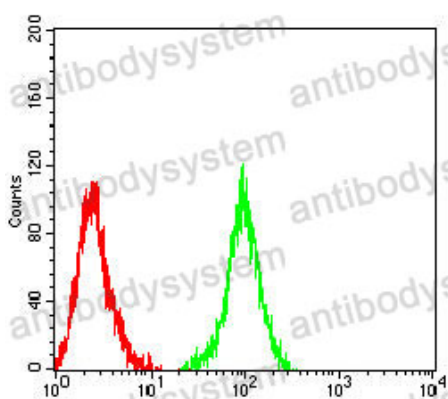
Store at 4°C short term (1-2 weeks). Store at -20°C 12 months. Store at -80°C long term.

**Note**

For research use only.

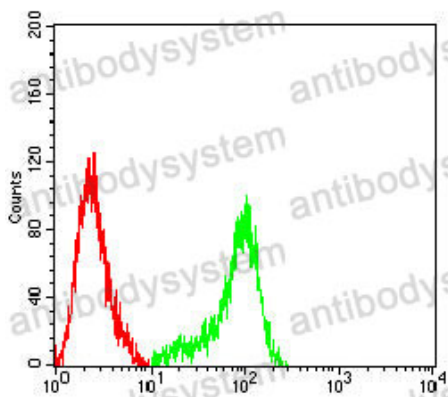
## Data Image

---



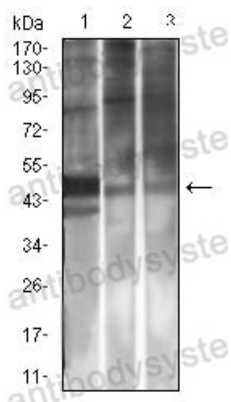
Flow Cytometry

Flow cytometric analysis of Jurkat cells using CD314 mouse mAb (green) and negative control (red).



Flow Cytometry

Flow cytometric analysis of THP-1 cells using CD314 mouse mAb (green) and negative control (red).



Western blot

Western blot analysis using CD314 mouse mAb against Rat Spleen (1), A549 (2), and HepG2 (3) cell lysate.