

# Anti-S100A4 Antibody (R3H11)

## Summary

---

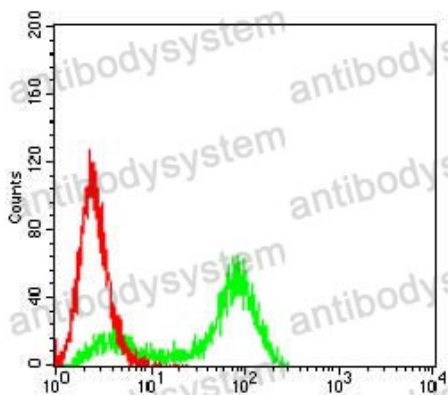
<b>Catalog No.</b>	RHD71002
<b>Clone ID</b>	R3H11
<b>Host species</b>	Mouse
<b>Tested applications</b>	ELISA: 1:10000, FCM: 1:200-1:400, IHC: 1:200-1:1000
<b>Species reactivity</b>	Human, Mouse, Rat
<b>Form</b>	Liquid
<b>Storage buffer</b>	0.01M PBS, pH 7.4, 0.05% Sodium Azide.
<b>Concentration</b>	1 mg/ml
<b>Purity</b>	>95% as determined by SDS-PAGE.
<b>Clonality</b>	Monoclonal
<b>Isotype</b>	IgG1
<b>Applications</b>	ELISA, FCM, IHC
<b>Target</b>	S100A4, Protein S100-A4, S100 calcium-binding protein A4, Calvasculin, Protein Mts1, MTS1, CAPL, Placental calcium-binding protein, Metastasin
<b>Purification</b>	Protein A/G purified from cell culture supernatant.
<b>Endotoxin level</b>	Please contact with the lab for this information.
<b>Accession</b>	P26447
<b>Stability and Storage</b>	Use a manual defrost freezer and avoid repeated freeze-thaw cycles. Store at 4°C short term (1-2 weeks). Store at -20°C 12 months. Store at -80°C long term.

Note

For research use only.

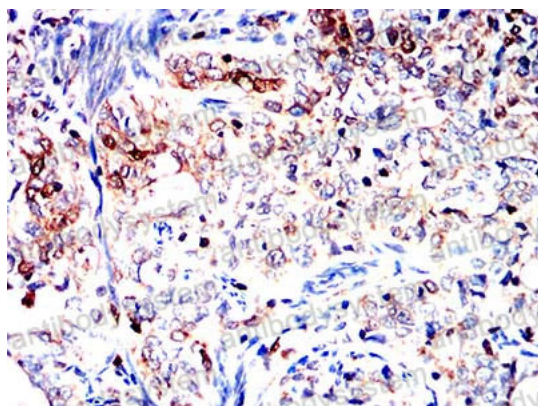
## Data Image

---



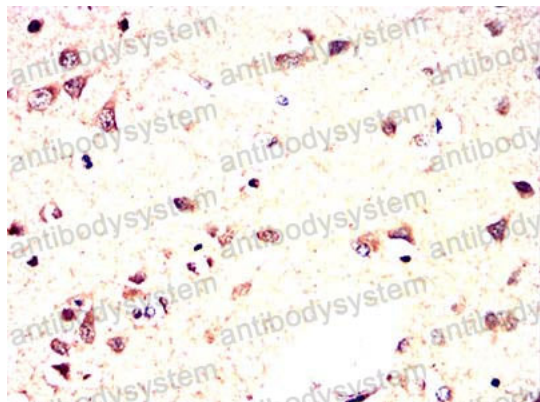
Flow Cytometry

Flow cytometric analysis of Hela cells using S100A4 mouse mAb (green) and negative control (red).



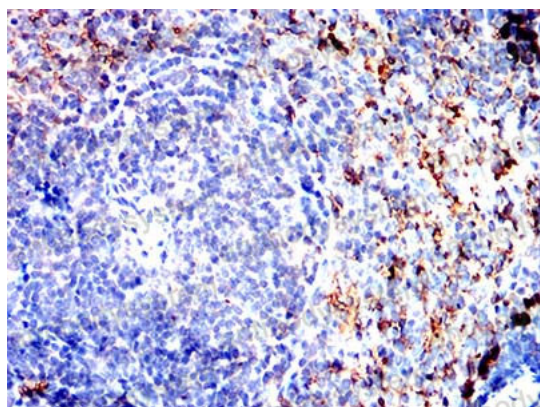
Immunohistochemical

Immunohistochemical analysis of paraffin-embedded human cervical cancer tissues using S100A4 mouse mAb with DAB staining.



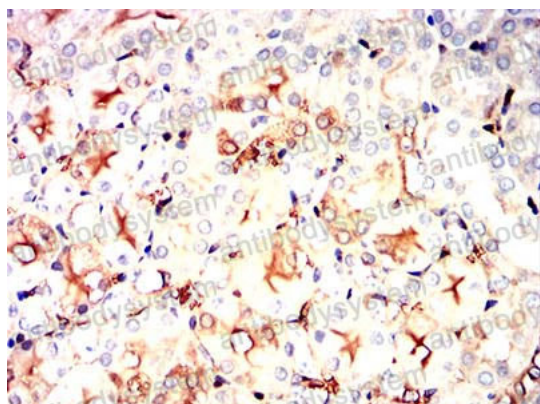
Immunohistochemical

Immunohistochemical analysis of paraffin-embedded human brain tissues using S100A4 mouse mAb with DAB staining.



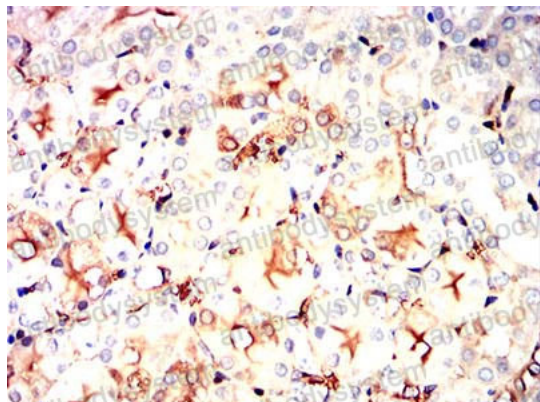
Immunohistochemical

Immunohistochemical analysis of paraffin-embedded mouse spleen tissues using S100A4 mouse mAb with DAB staining.



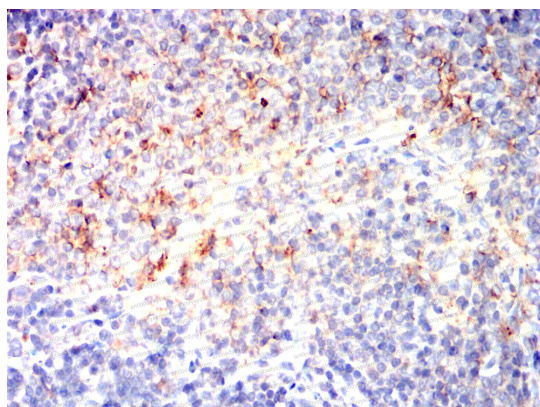
Immunohistochemical

Immunohistochemical analysis of paraffin-embedded mouse kidney tissues using S100A4 mouse mAb with DAB staining.



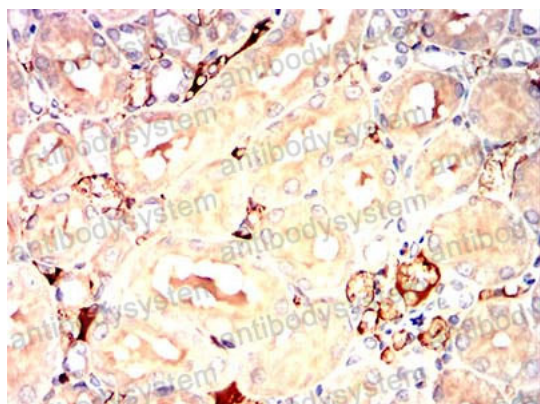
Immunohistochemical

Immunohistochemical analysis of paraffin-embedded mouse kidney tissues using S100A4 mouse mAb with DAB staining.



Immunohistochemical

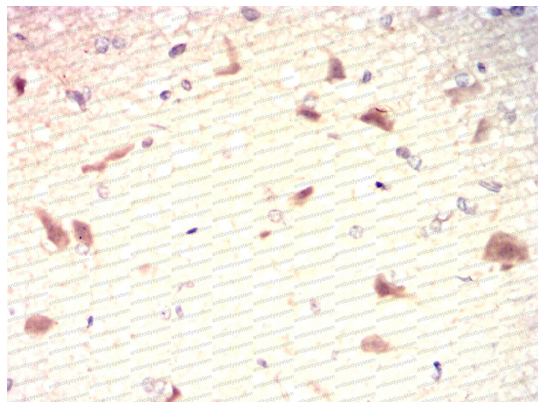
Immunohistochemical analysis of paraffin-embedded rat spleen tissues using S100A4 mouse mAb with DAB staining.



Immunohistochemical

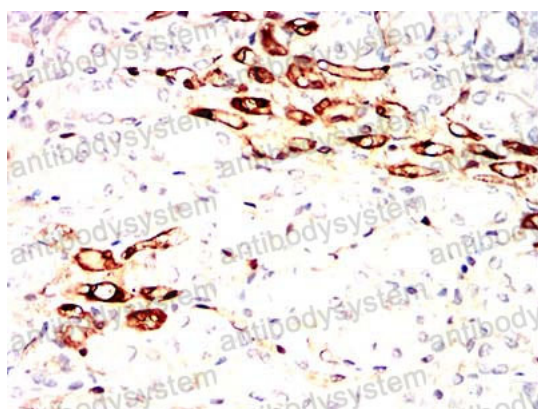
Immunohistochemical analysis of paraffin-embedded rat kidney tissues using S100A4 mouse mAb with DAB staining.





Immunohistochemical

Immunohistochemical analysis of paraffin-embedded rabbit brain tissues using S100A4 mouse mAb with DAB staining.



Immunohistochemical

Immunohistochemical analysis of paraffin-embedded rabbit kidney tissues using S100A4 mouse mAb with DAB staining.