

Anti-PAX6 Antibody (R3H06)

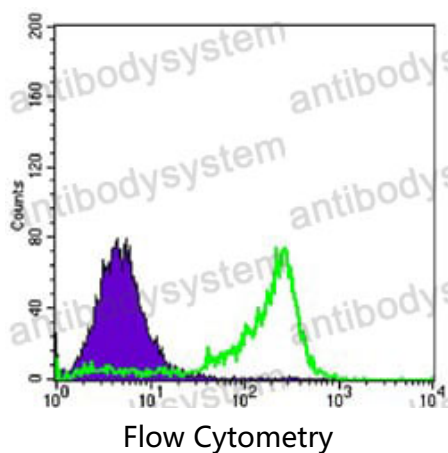
Summary

Catalog No.	RHD70002
Clone ID	R3H06
Host species	Mouse
Tested applications	FCM: 1:200-1:400
Species reactivity	Human
Form	Liquid
Storage buffer	0.01M PBS, pH 7.4, 0.05% Sodium Azide.
Concentration	1 mg/ml
Purity	>95% as determined by SDS-PAGE.
Clonality	Monoclonal
Isotype	IgG1
Applications	FCM
Target	AN2, Aniridia type II protein, Oculorhombin, PAX6, Paired box protein Pax-6
Purification	Protein A/G purified from cell culture supernatant.
Endotoxin level	Please contact with the lab for this information.
Accession	P26367
Stability and Storage	Use a manual defrost freezer and avoid repeated freeze-thaw cycles. Store at 4°C short term (1-2 weeks). Store at -20°C 12 months. Store at -80°C long term.

Note

For research use only.

Data Image



Flow cytometric analysis of 3T3-L1 cells using PAX6 mouse mAb (green) and negative control (purple).