

Anti-PSMA1 Antibody (R3G85)

Summary

Catalog No.	RHD67903
Clone ID	R3G85
Host species	Mouse
Tested applications	WB: 1:2000
Species reactivity	Human, Mouse
Form	Liquid
Storage buffer	0.01M PBS, pH 7.4, 0.05% Sodium Azide.
Concentration	1 mg/ml
Purity	>95% as determined by SDS-PAGE.
Clonality	Monoclonal
Isotype	IgG2b
Applications	WB
Target	NU, 30 kDa prosomal protein, HC2, Proteasome subunit alpha type-1, Proteasome nu chain, PROS30, PROS-30, PSC2, PSMA1, Proteasome component C2, Multicatalytic endopeptidase complex subunit C2, Macropain subunit C2
Purification	Protein A/G purified from cell culture supernatant.
Endotoxin level	Please contact with the lab for this information.
Accession	P25786

Stability and Storage

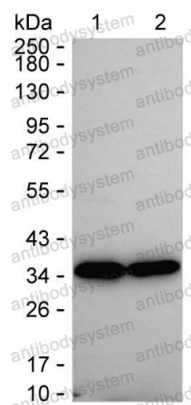
Use a manual defrost freezer and avoid repeated freeze-thaw cycles.

Store at 4°C short term (1-2 weeks). Store at -20°C 12 months. Store at -80°C long term.

Note

For research use only.

Data Image



Western blot

Western blot analysis using PSMA1 mouse mAb against HeLa lysate and 15 µg